



Josies Cottage, Barrow
Offers Over £430,000





An excellent opportunity to acquire a bungalow in turn-key condition, offered for sale with no onward chain, possessing approximately 1,700 square feet of accommodation. Located in the picturesque hamlet village of Barrow, Josie's Cottage possesses a high specification interior and spacious accommodation dimensions.

This detached bungalow is positioned on a good-sized plot generous parking options for 5/6 vehicles, and a double garage.

The property benefits from a newly fitted heating system including Worcester boiler and radiators along with being full electrical re-wire.

The property has been refurbished throughout to a highest specification, the property benefits from three double bedrooms with three en-suites, the third being a 'Jack & Jill' bathroom accessible from the hallway. The kitchen/diner is excellent for culinary endeavours and entertainment. The accommodation flows through to the living room which is abundant with natural light and enjoys the views over Rutland countryside. From here there is a sliding door to a patioed area, ideal for summer evenings.

Outside there is extensive paved patio area ideal for alfresco dining.





Mains Gas and Electric
Tenure: Freehold
EPC: C
Council Tax Band: F







Entrance Hall: 2.15m x 7.14m (7'1" x 23'5")

Kitchen/Diner: 3.61m x 7.14m (11'10" x 23'5")

Living Room: 4.32m (14'2") max x 7.14m (23'5")

Bedroom One: 3.97m x 3.35m (13' x 11')

Walk-in Wardrobe: 2.18m x 2.15m (7'2" x 7'1")

En-suite: 2.18m (7'2") x 3.10m (10'2") max

Bedroom Two: 3.06m x 3.55m (10'1" x 11'8")

En-suite: 1.48m x 1.72m (4'10" x 5'8")

Bedroom Three: 2.99m x 3.55m (9'10" x 11'8")

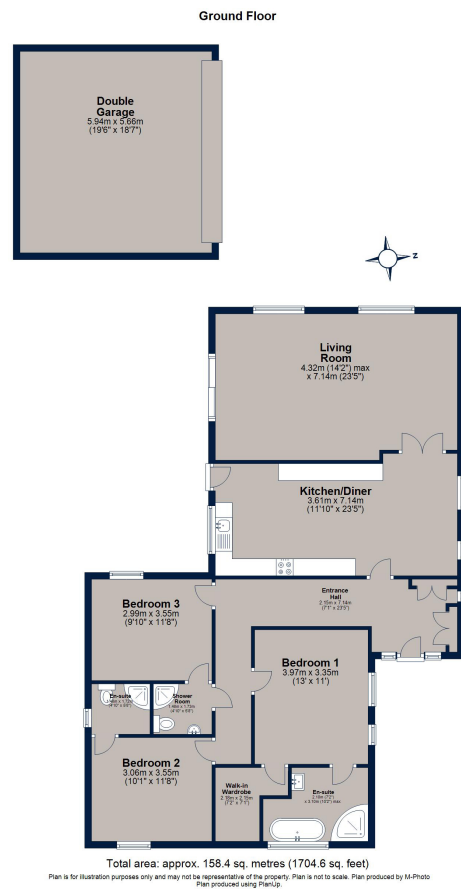
Shower Room: 1.48m x 1.73m (4'10" x 5'8")

Double Garage: 5.94m x 5.66m (19'6" x 18'7")





Josies Cottage, Main Street, Barrow



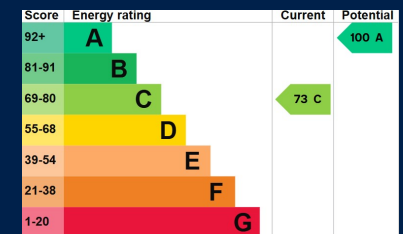
Osprey Oakham
4 Burley Road
Oakham
Rutland LE15 6DH
01572 756675
oakham@osprey-property.co.uk

Osprey Stamford
7 Red Lion Street
Stamford
Lincolnshire, PE9 1PA
01780 769269
stamford@osprey-property.co.uk

Osprey Oundle
6 Crown Court
Market Place
Oundle, PE8 4BQ
01832 272225
oundle@osprey-property.co.uk

Osprey Melton
8 Burton Road
Melton
Leicestershire, LE13 1AE
01664 778170
melton@osprey-property.co.uk

Barrow is a hamlet village situated within the heart of Rutland's countryside, approximately 5 miles north east of the market town of Oakham. The village is equidistant from the villages of Market Overton and Cottesmore, both offering village amenities. Conveniently placed for the A1 and Rutland Water which are a short drive away.



Agents Note: Whilst every care has been taken to prepare these particulars, they are for guidance purposes only. All measurements are approximate, and are for general guidance purposes only and whilst every care has been taken to ensure their accuracy, they should not be relied upon, and potential buyers/tenants are advised to recheck the measurements