



Pierce Crescent, Warrington

£350,000



A neutrally decorated, three-bedroom detached bungalow presented in immaculate condition. The open-plan kitchen/living/dining area is perfectly styled with duck egg tiling complimentary to the cream cupboards and beech wood effect worktops. This spacious home comprises of a porch, an open-plan, kitchen/living/dining area, three bedrooms, a conservatory and a modern family bathroom. French doors connect the third bedroom to the conservatory, providing an open and peaceful space, overlooking the low maintenance garden. Externally, this house benefits from a beautifully designed, private garden, a driveway and a garage, providing ample parking for up to 3 cars.

This pristine home is located in a peaceful cul-de-sac in the desirable village of Warmington, just a few miles from Oundle market town.

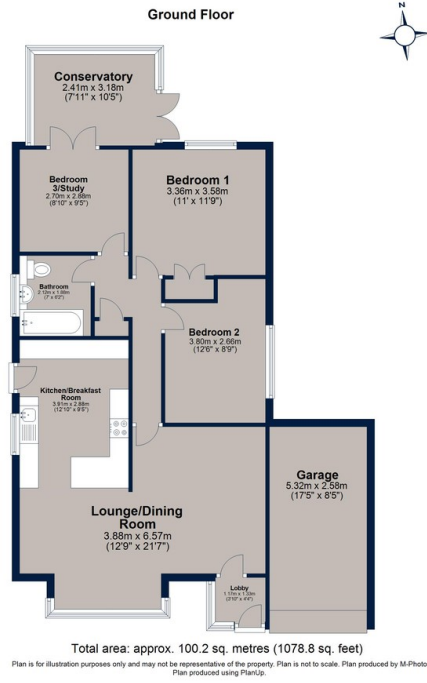
An internal viewing of this contemporary feeling property will not disappoint.

Tenure: Freehold
LPG Central Heating
Council Tax: Band C

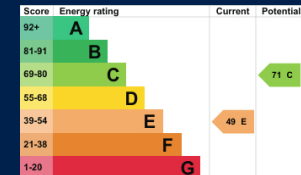




Pierce Crescent, Warmington



A spacious three-bedroom bungalow presented in beautiful condition, benefiting from a garage and a driveway. Located in the peaceful and sought-after village of Warmington. This immaculate home has a private garden and a cosy conservatory, providing light accommodation throughout.



Osprey Oakham
4 Burley Road
Oakham
Rutland LE15 6DH
01572 756675
oakham@osprey-property.co.uk

Osprey Stamford
7 Red Lion Street
Stamford
Lincolnshire, PE9 1PA
01780 769269
stamford@osprey-property.co.uk

Osprey Oundle
6 Crown Court
Market Place
Oundle, PE8 4BQ
01832 272225
oundle@osprey-property.co.uk

Osprey Melton
8 Burton Road
Melton
Leicestershire, LE13 1AE
01664 778170
melton@osprey-property.co.uk



Agents Note: Whilst every care has been taken to prepare these particulars, they are for guidance purposes only. All measurements are approximate, and are for general guidance purposes only and whilst every care has been taken to ensure their accuracy, they should not be relied upon, and potential buyers/tenants are advised to recheck the measurements