



Creed Road, Oundle
£330,000



A beautifully light, three-bedroom detached house presented in good condition, with the added benefit of a garage and a private rear garden. The property has tall ceilings throughout giving a spacious feel to all rooms, the entrance hall and first floor landing. Offering a spacious living room from front to back, a good size kitchen/dining room with French doors to the rear garden and a guest w.c. on the ground floor. On the first floor, the principal bedroom has built-in wardrobes and an en-suite shower room, and there are two further good-sized bedrooms and the family bathroom.

Externally the rear garden has plenty of room for entertaining and relaxing, with the added benefit of a side gate leading to a single garage.

An internal viewing of this neutrally styled and well-maintained family home will not disappoint.

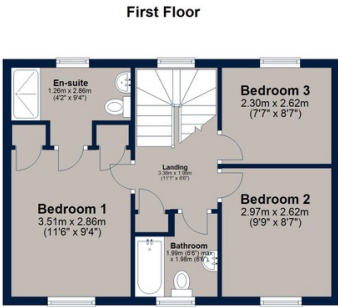
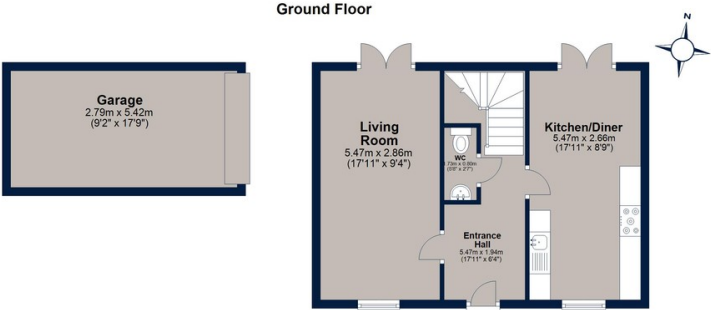
Situated off Glaphorn Road, approximately 1 mile from Oundle marketplace, Creed Road is within close proximity to the Primary School and the doctor's surgery.

- Tenure: Freehold
- All Mains Services Are Connected
- Gas Central Heating
- Solar Panel Owned
- Council Tax: Band D
- Management Fees Apply: £200pa for 2023/24





Creed Road, Oundle



Total area: approx. 98.6 sq. metres (1061.3 sq. feet)
Plan is for illustration purposes only and may not be representative of the property. Plan is not to scale. Plan produced by M-Photo
Plan produced using PlanUp.



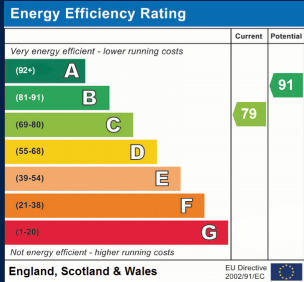
Osprey Oakham
4 Burley Road
Oakham
Rutland LE15 6DH
01572 756675
oakham@osprey-property.co.uk

Osprey Stamford
7 Red Lion Street
Stamford
Lincolnshire, PE9 1PA
01780 769269
stamford@osprey-property.co.uk

Osprey Oundle
6 Crown Court
Market Place
Oundle, PE8 4BQ
01832 272225
oundle@osprey-property.co.uk

Osprey Melton
8 Burton Road
Melton
Leicestershire, LE13 1AE
01664 778170
melton@osprey-property.co.uk

An immaculately presented three-bedroom detached home with garage and private garden. A low maintenance and ready to move into house on a popular residential development.



Agents Note: Whilst every care has been taken to prepare these particulars, they are for guidance purposes only. All measurements are approximate, and are for general guidance purposes only and whilst every care has been taken to ensure their accuracy, they should not be relied upon, and potential buyers/tenants are advised to recheck the measurements