



Offers In The Region Of £490,000 | Freehold
Main Street, Great Dalby, LE14 2ET





Main Street, Great Dalby LE14 2ET

- No Chain
 - Stunning Period Property
 - Four Reception Rooms
 - Stunning Presentation
-

Period property purchasers arise; encapsulating everything period living offers, from extensive proportions to high ceilings, original fireplaces with exposed slate hearths and deep skirting boards, all combined with a modern, high-end finish - this charming home is sure to impress.

'Rose Cottage', as named in the original conservation order of Great Dalby, was built in 1887 and offers c. 2,000 square feet of living accommodation. The accommodation is naturally light with neutral decoration throughout and split over three floors with an additional floor encompassing a basement of approximately 140 square feet.

The entrance is welcoming and offers an eloquent ode to the era of the property, noting the original stained-glass window. Enjoying the front aspect, the sitting room features a bay window of the original sash configuration. There is also a working fireplace, plus storage and shelving within the recesses.

There is an additional living room enjoying the front aspect with high ceilings, period feature fireplace with exposed slate mantle and hearth, original cornice and neutral decoration. This cosy feeling room is currently used as a living room/snug.









Formerly the original kitchen to the property, the dining room is of generous proportion featuring the recess/fireplace for the original range, plus the original pantry - currently used as a convenient storage cupboard.

The kitchen was formerly the scullery to the property - the room which would have traditionally acted as a "kitchen overflow" or utilised for laundering clothes. The kitchen possesses the original brick floor, shelving and benefits from new taps, cooker and Cotswold style units.

A door leads to the pantry, formerly the maids' access point to go upstairs, and is utilised well for storage.

The first-floor accommodation is comprised of two double bedrooms and an office/third double bedroom. The original principal room enjoys front facing views with the original fireplace which has been polished with an exposed slate hearth. There is another double bedroom facing the front aspect with views, built in storage and a further recess for further wardrobing if desired.

The landing WC has been recently refloored and has a fitted mirror with sensor lighting. Currently configured as an office, the bedroom five (listed on floorplan as main bedroom) offers fantastic dimensions, storage and original fireplace. There is space for a double bed. Leading to the main bathroom, which has been finished to a high standard with modern sink and WC, lino flooring and even a new illuminated LED mirror with Bluetooth speakers!

There is a laundry room off the bathroom, homing a high standard washing machine and tumble dryer.

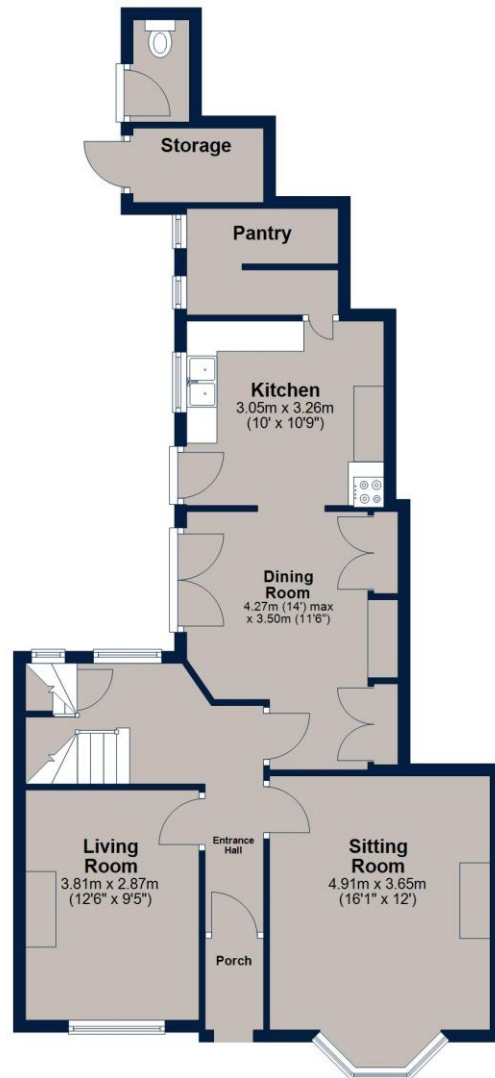
The third-floor houses two further double rooms; with fantastic, elevated views of the village, church and countryside towards Melton Mowbray. This floor is heated by thermostatically controlled electric radiators. There is a WC on the third floor - formerly the tank room which captured rainwater to flush the WC on the first floor.

Externally, the property has a walled cottage garden to the rear set with several herbaceous border plants. There is an outbuilding for storage purposes as well as an outside WC, both with lighting. To the front, there is a generous block paved driveway providing parking for several vehicles, established bedding plants and trees and an electrical socket.



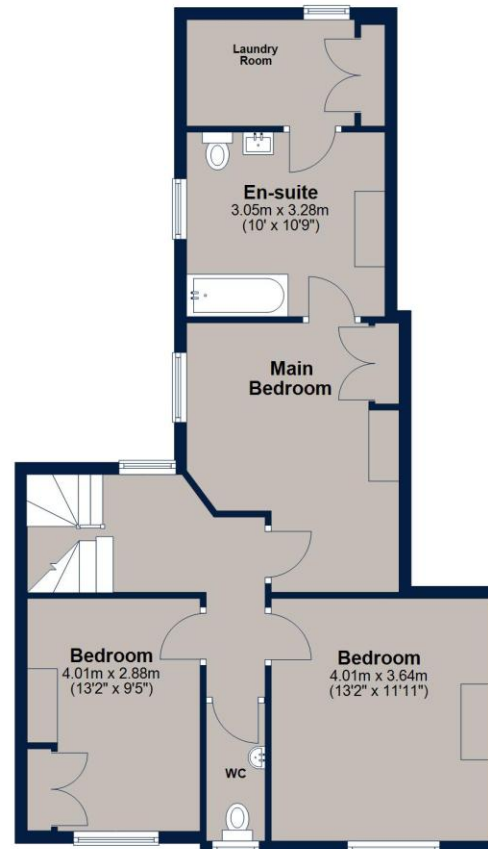
Ground Floor

Approx. 71.7 sq. metres (772.3 sq. feet)



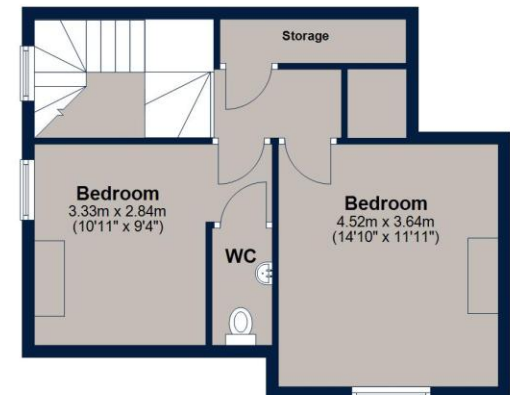
First Floor

Approx. 68.8 sq. metres (740.0 sq. feet)



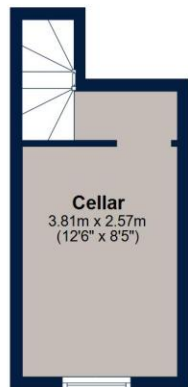
Second Floor

Approx. 40.8 sq. metres (438.7 sq. feet)



Basement

Approx. 13.1 sq. metres (141.2 sq. feet)



Total area: approx. 194.4 sq. metres (2092.2 sq. feet)

This floor plan is for illustrative purposes only and is not to scale. All measurements, doors, windows, rooms and other items are approximate and should not be relied upon for any purpose.
Plan produced using PlanUp.

Key Information

Local Authority: Melton Borough Council

Council Tax Band: D

Tenure: Freehold

EPC Rating: E

Score	Energy rating	Current	Potential
92+	A		
81-91	B		
69-80	C		80 C
55-68	D		
39-54	E	52 E	
21-38	F		
1-20	G		



Osprey Melton Mowbray Sales

8a Burton Street, Melton Mowbray
Leicestershire
LE13 1AE

T: 01664 778170

osprey-property.co.uk



Mortgage Scout* are experts at seeking out the best way to buy the home of your dreams. They've been matching buyers with money saving mortgages since 2003. Combining attention to detail with industry knowledge, they'll track down the mortgage deal that works for you.

*Your home may be repossessed if you do not keep up repayments on your mortgage. There may be a fee for mortgage advice. The actual amount you pay will depend upon your circumstances. The fee is up to 1%, but a typical fee is 0.3% of the amount borrowed.

Important Notice

We have prepared these property particulars as a general guide to a broad description of the property. They are not intended to constitute part of an offer or contract. We have not carried out a structural survey and the services, appliances and specific fittings have not been tested. All photographs, measurements, floorplans and distances referred to are given as a guide only and should not be relied upon for the purchase of carpets or any other fixtures or fittings. Lease details, service charges and ground rent (where applicable) and council tax are given as a guide only and should be checked and confirmed by your Solicitor prior to exchange of contracts. The copyright of all details, photographs and floorplans remain exclusive to Osprey Property.