



SPREY
PROPERTY

John Clare Close, Oakham
Asking Price Of £150,000



This deceptively sized and immaculately presented two-bedroom, second-floor apartment is pleasantly positioned and located within Oakham, a popular development within proximity to the picturesque market town of Oakham including the Train Station. Designed with space and modern living in mind, the property offers a substantially sized open plan kitchen/dining and living area with dual aspect windows for a bright airy feel. The spacious principal bedroom, one further bedroom, and a three-piece bathroom. An ideal purchase for first-time buyers, professionals, investors, or those looking for accommodation over one level. There is also a telecom secure entrance system and allocated parking.

All Mains Connected:

TENURE: Leasehold: Service charge - ground Rent - Management Fee's apply

LEASE REMAINING:

COUNCIL TAX: B

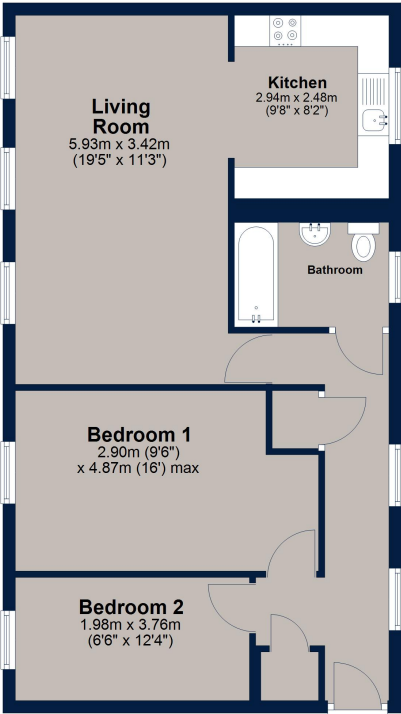
EPC: B





John Clare Close, Oakham

Second Floor
 Approx. 66.1 sq. metres (711.1 sq. feet)



Total area: approx. 66.1 sq. metres (711.1 sq. feet)

This floor plan is for illustrative purposes only and is not to scale. All measurements, doors, windows, rooms and other items are approximate and should not be relied upon for any purpose.
 Plan produced using PlanUp.

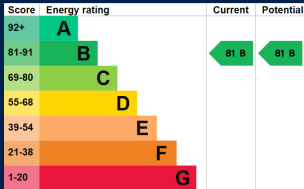
Osprey Oakham
 4 Burley Road
 Oakham
 Rutland LE15 6DH
 01572 756675
 oakham@osprey-property.co.uk

Osprey Stamford
 7 Red Lion Street
 Stamford
 Lincolnshire, PE9 1PA
 01780 769269
 stamford@osprey-property.co.uk

Osprey Oundle
 6 Crown Court
 Market Place
 Oundle, PE8 4BQ
 01832 272225
 oundle@osprey-property.co.uk

Osprey Melton
 8 Burton Road
 Melton
 Leicestershire, LE13 1AE
 01664 778170
 melton@osprey-property.co.uk

Oakham is a highly popular market town, offering a range of amenities and services including restaurants, shops, bars, doctor's surgery, hospital and both primary/secondary schooling. There is a bus station providing regular services around the town and through to neighbouring villages and towns, as well as a train station with direct links to further towns and cities.



Agents Note: Whilst every care has been taken to prepare these particulars, they are for guidance purposes only. All measurements are approximate, and are for general guidance purposes only and whilst every care has been taken to ensure their accuracy, they should not be relied upon, and potential buyers/tenants are advised to recheck the measurements