



£650,000 | Freehold

Glaphorn Road, Oundle PE8 4PS







## Key Features & Description

- Three Bedroom Detached Bungalow
- Two Reception Rooms
- Large Driveway and Double Garage
- South Facing Garden
- Immaculate Condition
- Generous Plot
- EPC Rating C | Council Tax Band E
- Gas Central Heating

A beautifully presented extended three-bedroom detached bungalow, set on a generous plot with a long frontage. Upon entering the home, you're welcomed into a spacious entrance hallway featuring parquet flooring and high ceilings.

The hallway benefits from three built-in storage cupboards, offering ample storage space. The parquet flooring continues seamlessly into the generously sized living room, which features a contemporary gas fireplace and bi-folding doors that open onto the garden. The living room leads directly into the dining room through an open doorway; the dining room enjoys the same elegant flooring and has French doors to the garden-perfect for entertaining and creating a seamless indoor-outdoor connection. The kitchen/breakfast room is bright and neutrally decorated, equipped with composite worktops and a range of integrated appliances. Additionally, there is a separate utility room, with space for a washing machine and tumble dryer and a second door to the garden for added convenience.

All three bedrooms are spacious doubles. The principal bedroom is particularly generous, with wood flooring and ample space for freestanding or fitted wardrobes. It also benefits from a modern en-suite shower room by Kutschen Kraft, finished in a neutral palette with built-in storage, contemporary fittings, and tiled flooring. The family bathroom features floor-to-ceiling tiles, a window for natural light, and a clean, modern design. To the rear, the private garden is south facing and not overlooked, it includes a large patio area, raised planted borders and a separate seating area.

The expansive driveway easily accommodates up to five vehicles, in addition to a detached double garage and a second driveway in front, providing space for two more cars. paved area in front, providing space for two more cars.

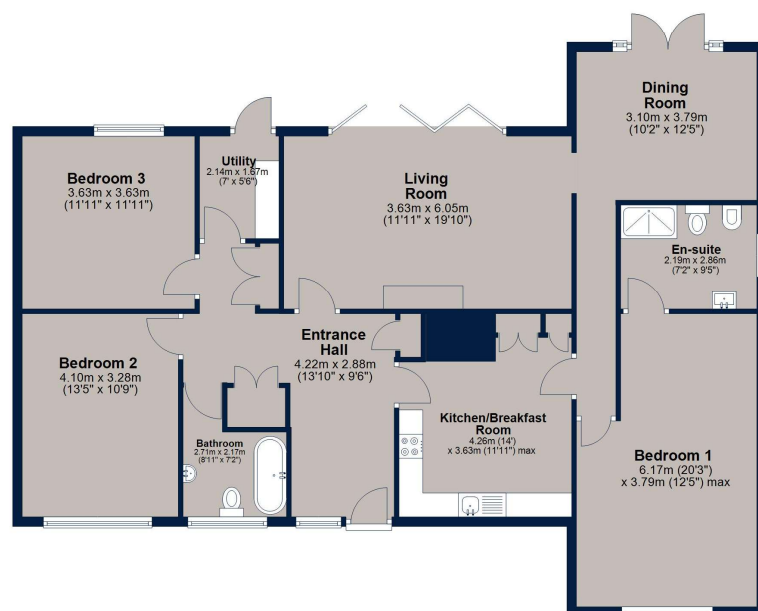






## Ground Floor

Approx. 162.6 sq. metres (1750.5 sq. feet)



Total area: approx. 162.6 sq. metres (1750.5 sq. feet)

This floor plan is for illustrative purposes only and is not to scale. All measurements, doors, windows, rooms and other items are approximate and should not be relied upon for any purpose.  
Plan produced using PlanUp.

### Important Notice

We have prepared these property particulars as a general guide to a broad description of the property. They are not intended to constitute part of an offer or contract. We have not carried out a structural survey and the services, appliances and specific fittings have not been tested. All photographs, measurements, floorplans and distances referred to are given as a guide only and should not be relied upon for the purchase of carpets or any other fixtures or fittings. Lease details, service charges and ground rent (where applicable) and council tax are given as a guide only and should be checked and confirmed by your Solicitor prior to exchange of contracts. The copyright of all details, photographs and floorplans remain exclusive to Osprey Property.



**Osprey Oundle Sales**  
6 Crown Court, Market Place, Oundle PE8 4BQ  
**T: 01832 272225 |**  
**osprey-property.co.uk**