



Offers Over £350,000 | Freehold

Queensway, Old Dalby, Melton Mowbray, LE14 3QQ





## Key Features & Description

- Extended semi-detached family home
- Spacious dimensions for entertaining
- Cosy living room with multi-fuel stove
- Rear extension with underfloor heating
- Rural location overlooking fields
- Large driveway and parking for several vehicles
- Landscaped garden with raised beds
- Friendly neighbourhood
- EPC Rating D | Council Tax Band D

Guide Price - £350,000-£370,000

This well-presented four-bedroom semi-detached home offers generous living space, modern upgrades, and beautiful countryside views.

To the front, a newly upgraded driveway provides ample off-road parking for several vehicles. Internally, the property benefits from a rear ground floor extension incorporating a stylish bar area with underfloor heating, ideal for entertaining, boasting floor to ceiling double-glazed windows and glass roof too, bringing the outside in. The accommodation further includes a cosy living room with open fire and a dining room currently utilised as a games room with pool table, offering flexible use to suit family needs.

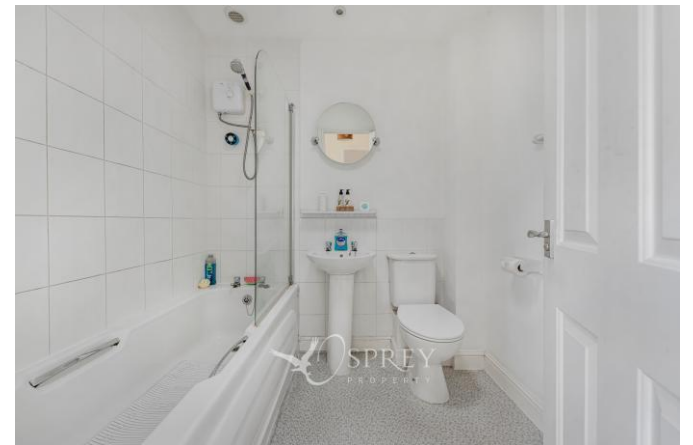
The kitchen is well-equipped for culinary endeavours and boasts a range of base and eye level units, integrated dishwasher and fridge freezer and capacious dimensions for a second breakfast or dining table if desired.

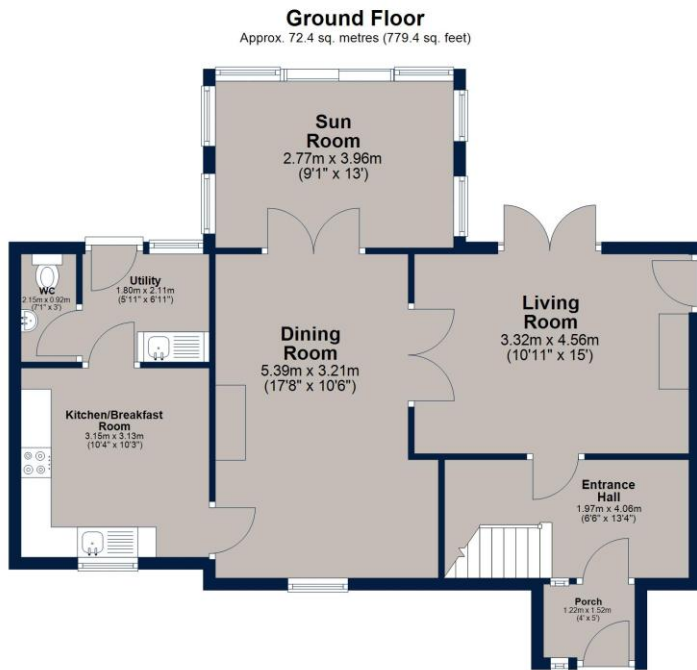
On the first floor, there are four well-proportioned bedrooms, providing versatile living arrangements for families or home working. Bedroom one sits in an extended part of the property, boasting an en-suite shower room and walk-in wardrobe. Three bedrooms are generous double rooms with bedroom four configured as an office by the current owners.

Externally, the rear garden overlooks open fields and features raised beds, a large shed, and generous outdoor space, making it perfect for both relaxation and gardening enthusiasts.

An opportunity not to be missed, situated within a well-established residential area with countryside walks and footpaths in abundance a few steps from the front door. Old Dalby is a thriving community with a highly-regarded primary school and its esteemed public house 'The Crown'.







Total area: approx. 131.6 sq. metres (1416.3 sq. feet)

This floor plan is for illustrative purposes only and is not to scale. All measurements, doors, windows, rooms and other items are approximate and should not be relied upon for any purpose.  
Plan produced using PlanUp.

**Important Notice**

We have prepared these property particulars as a general guide to a broad description of the property. They are not intended to constitute part of an offer or contract. We have not carried out a structural survey and the services, appliances and specific fittings have not been tested. All photographs, measurements, floorplans and distances referred to are given as a guide only and should not be relied upon for the purchase of carpets or any other fixtures or fittings. Lease details, service charges and ground rent (where applicable) and council tax are given as a guide only and should be checked and confirmed by your Solicitor prior to exchange of contracts. The copyright of all details, photographs and floorplans remain exclusive to Osprey Property.



**Osprey Melton Mowbray Sales**  
8A Burton Street, Melton Mowbray, Leicestershire LE13 1AE  
T: 01664 778170 | melton@osprey-property.co.uk  
osprey-property.co.uk