



Offers In Excess Of £298,000 | Freehold  
Thorpe Road, Melton Mowbray, LE13 1SE







## Thorpe Road, LE13 1SE

---

- Charming Victorian villa built in 1897
  - Four generously sized bedrooms
  - Spacious kitchen/dining room with multi-fuel stove
  - Original hallway flooring and high ceilings throughout
  - Sizeable rear garden with mature planting
  - Offered with no onward chain
- 

A rare opportunity to acquire Victoria Villa, a striking four-bedroom Victorian villa dating back to 1897. Brimming with original features and timeless charm, this elegant residence offers generous living accommodation, a sizeable garden, and can be sold with no onward chain.

The property opens into a welcoming hallway, where the original flooring and impressive high ceilings immediately set the tone. Two well-proportioned reception rooms provide versatile living space, each enriched with period character, while the large kitchen and dining room forms the heart of the home. Complete with a traditional multi-fuel stove, it offers a perfect setting for both family gatherings and entertaining.

Upstairs, four spacious bedrooms are filled with natural light, providing comfortable accommodation for families, guests, or home working.

Externally, Victoria Villa boasts a substantial rear garden, well stocked with mature planting. Highlights include a flourishing buddleia, a magnificent eucalyptus tree, an established apple tree, and a blackberry bush at the garden's edge-offering both beauty and seasonal interest. An alley passage is also included within the external dimensions, adding further practicality to this characterful home.

















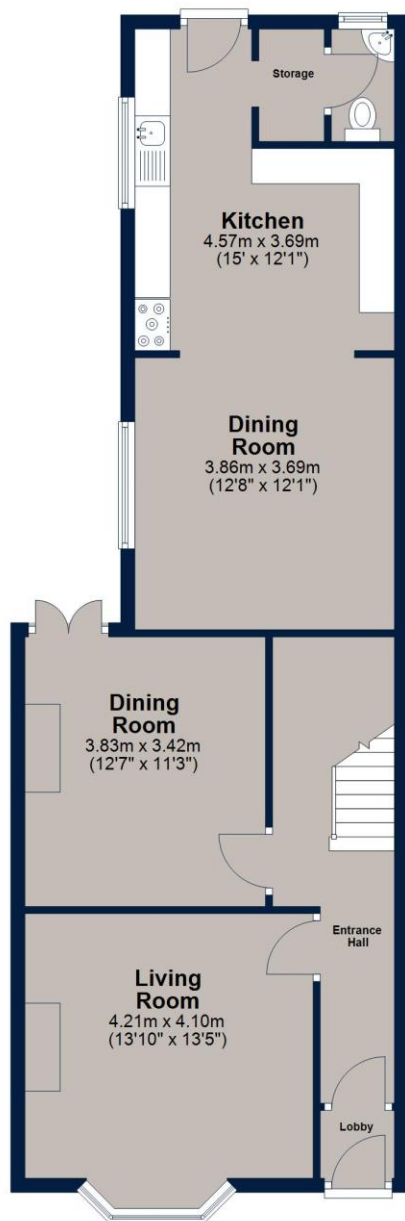
Additional benefits include on-street parking, freehold tenure, and the opportunity to purchase with no onward chain.

Victoria Villa presents a rare blend of historic character and modern-day comfort, making it an exceptional home in a sought-after setting.



### Ground Floor

Approx. 72.6 sq. metres (781.2 sq. feet)



### First Floor

Approx. 81.6 sq. metres (878.5 sq. feet)



Total area: approx. 154.2 sq. metres (1659.7 sq. feet)

This floor plan is for illustrative purposes only and is not to scale. All measurements, doors, windows, rooms and other items are approximate and should not be relied upon for any purpose.  
Plan produced using PlanUp.

# Key Information

Local Authority

Council Tax  
Band = C

Tenure  
Freehold

EPC  
Rating = D

Score	Energy rating	Current	Potential
92+	A		
81-91	B		83 B
69-80	C		
55-68	D	62 D	
39-54	E		
21-38	F		
1-20	G		



**Osprey Melton Mowbray Sales**  
8A Burton Street, Melton Mowbray  
Leicestershire  
LE13 1AE

T: **01664 778170**

**osprey-property.co.uk**



Mortgage Scout\* are experts at seeking out the best way to buy the home of your dreams. They've been matching buyers with money saving mortgages since 2003. Combining attention to detail with industry knowledge, they'll track down the mortgage deal that works for you.

\*Your home may be repossessed if you do not keep up repayments on your mortgage. There may be a fee for mortgage advice. The actual amount you pay will depend upon your circumstances. The fee is up to 1%, but a typical fee is 0.3% of the amount borrowed.

## Important Notice

We have prepared these property particulars as a general guide to a broad description of the property. They are not intended to constitute part of an offer or contract. We have not carried out a structural survey and the services, appliances and specific fittings have not been tested. All photographs, measurements, floorplans and distances referred to are given as a guide only and should not be relied upon for the purchase of carpets or any other fixtures or fittings. Lease details, service charges and ground rent (where applicable) and council tax are given as a guide only and should be checked and confirmed by your Solicitor prior to exchange of contracts. The copyright of all details, photographs and floorplans remain exclusive to Osprey Property.