



Offers in the region of £475,000 | Freehold

Main Street, Tansor, Northamptonshire, PE8, PE8 5HS





## Key Features & Description

- Air Source Heat Pump
- Village Location
- Countryside Views
- Open-Plan Living
- Driveway
- En-Suite Shower Room
- EPC Rating D | Council Tax Band C

\*COUNTRYSIDE VIEWS\* \* LARGE GARDEN\* \*OPEN-PLAN LIVING\* \*DRIVEWAY\*  
 \*AIRSOURCE HEAT PUMP\* \*EN-SUITE SHOWER ROOM\* \*VILLAGE LOCATION\*

A four-bedroom semi-detached home, extended and renovated throughout, located in the village of Tansor.

The property opens into a bright entrance hallway with wooden flooring, leading to a spacious open-plan kitchen, living and dining room. This main living space is bright and well proportioned, offering flexible areas for seating, dining and working, and benefits from underfloor heating.

Sliding glass doors open onto the garden providing stunning views across open countryside.

The contemporary kitchen includes a range of wall and base units, ample preparation space and a central island with seating. There is also space for a large dining table.

A separate reception room provides additional flexibility as a home office, snug, playroom or bedroom. A cloakroom completes the ground floor.

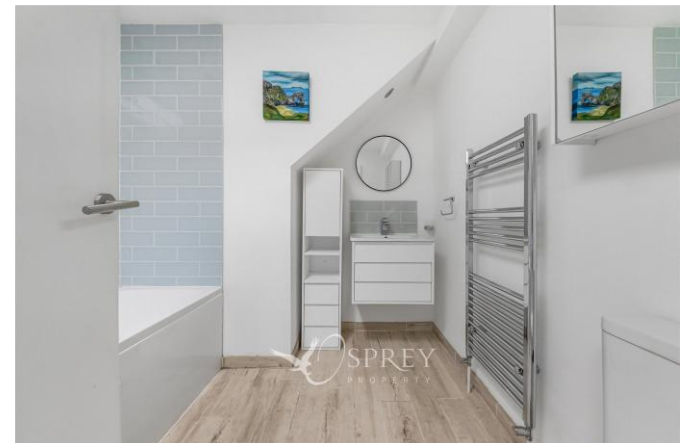
Upstairs, the main bedroom has views across open fields through full-length solar glass windows. The en-suite shower room includes built-in storage, a large shower, a heated towel rail and two windows.

There are three further well-proportioned double bedrooms and a family bathroom.

Outside, the south-facing garden is large, private, and backs onto open fields. A spacious raised patio provides the ideal spot for outdoor dining and entertaining, with steps leading down to a well-maintained lawn bordered by mature planting. The garden also includes a useful outbuilding, perfect for storage or use as a workshop.

To the front, there is a driveway providing parking for two to three cars, along with a front lawn.

Located in the picturesque village of Tansor.



**Ground Floor**  
Approx. 90.2 sq. metres (971.3 sq. feet)



**First Floor**  
Approx. 59.6 sq. metres (641.6 sq. feet)



Total area: approx. 149.9 sq. metres (1613.0 sq. feet)

Plan is for illustration purposes only and may not be representative of the property. Plan is not to scale. Plan produced by M-Photo. www.m-photo.pro  
Plan produced using PlanUp.

**Important Notice**

We have prepared these property particulars as a general guide to a broad description of the property. They are not intended to constitute part of an offer or contract. We have not carried out a structural survey and the services, appliances and specific fittings have not been tested. All photographs, measurements, floorplans and distances referred to are given as a guide only and should not be relied upon for the purchase of carpets or any other fixtures or fittings. Lease details, service charges and ground rent (where applicable) and council tax are given as a guide only and should be checked and confirmed by your Solicitor prior to exchange of contracts. The copyright of all details, photographs and floorplans remain exclusive to Osprey Property.