



Asking Price £575,000 | Freehold
Orchard Grove, Maxey PE6 9EY





Orchard Grove, Maxey PE6 9EY

- Offered with No Forward Chain
 - Two En-Suites plus Family Bathroom
 - Open Plan Kitchen/Dining Area
 - Triple Aspect Lounge with Garden Access
 - Double Garage and Driveway
 - Peaceful Cul de Sac Location
 - Easy Access to Stamford and Peterborough
 - Village Location
 - Neutral Decoration
 - Four Double Bedrooms
-

This beautifully presented four-bedroom detached home effortlessly combines contemporary living with the timeless appeal of rural life. Finished to a high standard and neutrally decorated throughout, the property offers a light, spacious feel with practical features to suit modern family life.

Situated within easy reach of transport hubs such as Stamford and Peterborough, the location provides the best of both worlds: peaceful countryside living with convenient access to London via direct rail links.

Step inside through the large, welcoming entrance hall. To the left, double doors open into a versatile snug or games room, while to the right, a generously sized lounge enjoys triple-aspect windows and French doors leading to the garden, filling the space with natural light.

At the heart of the home lies the open-plan kitchen, breakfast, and dining area – a superb space for family life and entertaining. Fitted with attractive wooden base and wall units offering ample storage, it is complemented by a separate utility room with external access for added convenience. A home office and a downstairs WC complete the ground floor accommodation.







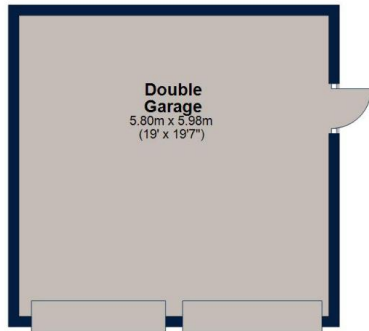


 SPREY
PROPERTY

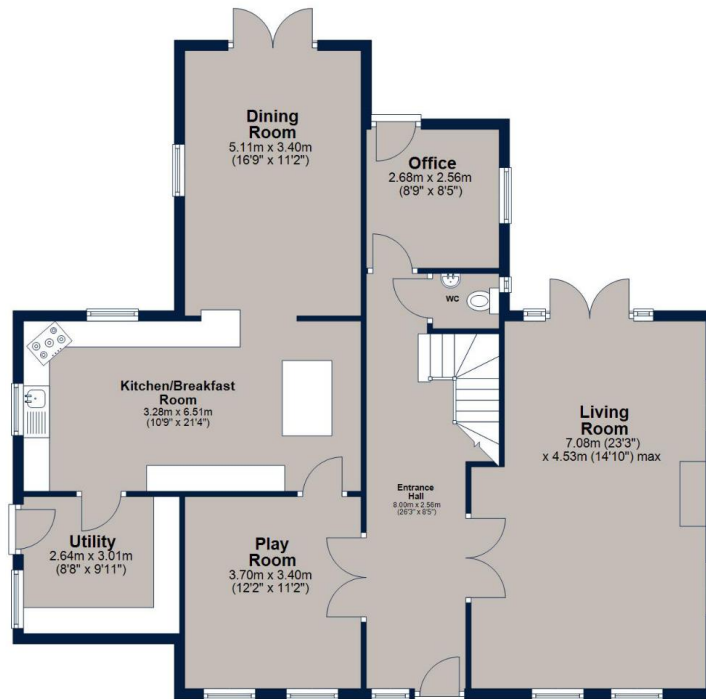
Upstairs, a central landing with built-in storage leads to four well-proportioned bedrooms. The principal and second bedrooms each benefit from modern en-suite shower rooms, while the remaining rooms are served by a spacious family bathroom featuring a bath with shower over. All bedrooms are equipped with generous built-in wardrobes.

Outside, the property boasts a good-sized rear garden with a lawned area and a patio – ideal for summer entertaining. A double garage and private driveway provide ample off-road parking for multiple vehicles.

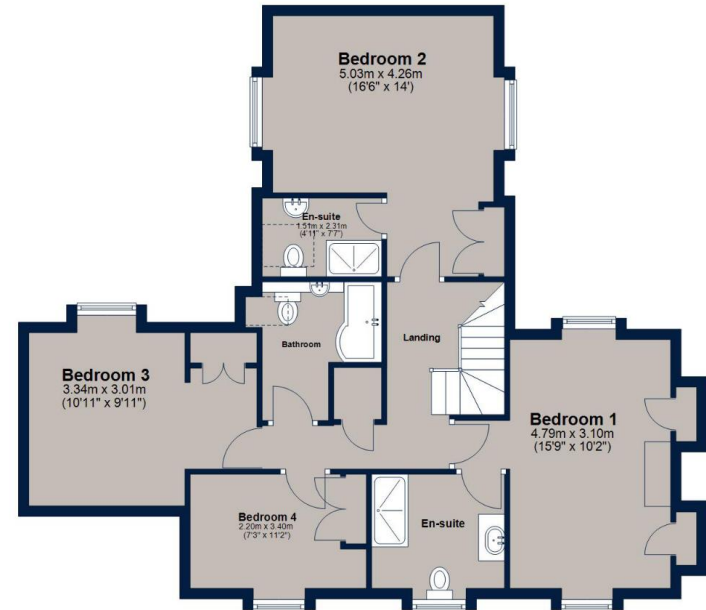




Ground Floor
Approx. 152.1 sq. metres (1637.3 sq. feet)



First Floor
Approx. 90.2 sq. metres (971.3 sq. feet)



Total area: approx. 242.3 sq. metres (2608.6 sq. feet)



Key Information

Local Authority

Council Tax
Band = F

Tenure
Freehold

EPC
Rating = C

Score	Energy rating	Current	Potential
92+	A		
81-91	B		81 B
69-80	C	72 C	
55-68	D		
39-54	E		
21-38	F		
1-20	G		



Osprey Oakham Sales

4 Burley Road, Oakham

Rutland

LE15 6DH

T: **01572 756675**

osprey-property.co.uk



Mortgage Scout* are experts at seeking out the best way to buy the home of your dreams. They've been matching buyers with money saving mortgages since 2003. Combining attention to detail with industry knowledge, they'll track down the mortgage deal that works for you.

*Your home may be repossessed if you do not keep up repayments on your mortgage. There may be a fee for mortgage advice. The actual amount you pay will depend upon your circumstances. The fee is up to 1%, but a typical fee is 0.3% of the amount borrowed.

Important Notice

We have prepared these property particulars as a general guide to a broad description of the property. They are not intended to constitute part of an offer or contract. We have not carried out a structural survey and the services, appliances and specific fittings have not been tested. All photographs, measurements, floorplans and distances referred to are given as a guide only and should not be relied upon for the purchase of carpets or any other fixtures or fittings. Lease details, service charges and ground rent (where applicable) and council tax are given as a guide only and should be checked and confirmed by your Solicitor prior to exchange of contracts. The copyright of all details, photographs and floorplans remain exclusive to Osprey Property.