



£330,000 | Freehold

West Street, Oundle PE8 4EJ





Key Features & Description

- Two Bedroom Mid-Terraced Home
- Beautifully Presented
- Courtyard Garden
- Character Features
- Town Centre Location
- No Forward Chain
- EPC Rating D | Council Tax Band C
- Service Charge £0 PA | Ground rent £0 PA | 0 years
- Gas Central Heating

A beautifully presented character cottage, tucked away down a quiet lane just a short walk from the heart of Oundle market town.

Upon entering, you're welcomed by a spacious entrance hallway with a built-in storage cupboard. Quarry tiled flooring runs throughout the ground floor and benefits from underfloor heating. Sliding doors lead into the kitchen, which features white cabinetry, wooden worktops, a ceramic sink, a sash window, an integrated dishwasher, and space for a washing machine and fridge/freezer. There's also room for a small breakfast table.

The living room retains charming original features, including exposed beams and a large bay with a sash window overlooking the courtyard. This space is enhanced by two additional windows, one with a built-in window seat. The focal point of the room is a large fireplace with a log burner.

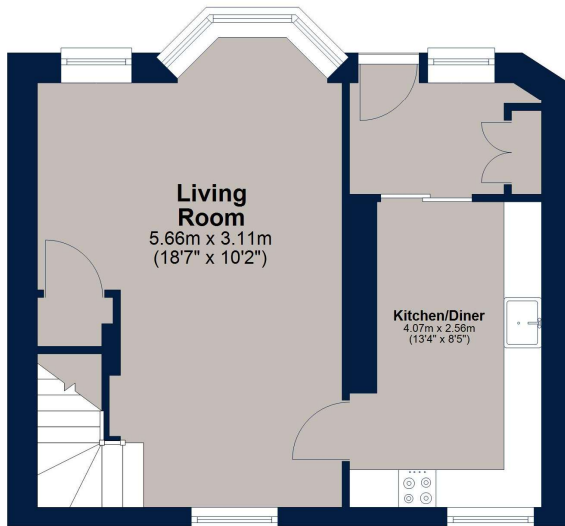
Stairs rise to the spacious landing area, this is a versatile space, currently set up as an office. High ceilings throughout the first floor add to the open, airy feel of this home. The main bedroom is a generous double, with a sash window and window seat below. The second double bedroom is dual aspect and includes a built-in cupboard. The bathroom completes the first floor, featuring tiled flooring, a large bath with an overhead shower, and two windows allowing for plenty of natural light.

Outside, a secluded courtyard garden provides a private space for outdoor dining, enhanced by recessed lighting.



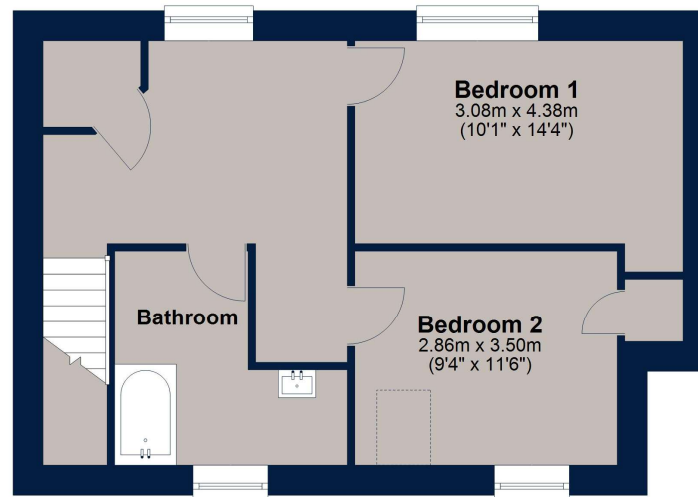
Ground Floor

Approx. 38.3 sq. metres (412.4 sq. feet)



First Floor

Approx. 46.9 sq. metres (504.5 sq. feet)



Total area: approx. 85.2 sq. metres (916.9 sq. feet)

This floor plan is for illustrative purposes only and is not to scale. All measurements, doors, windows, rooms and other items are approximate and should not be relied upon for any purpose.
Plan produced using PlanUp.

Important Notice

We have prepared these property particulars as a general guide to a broad description of the property. They are not intended to constitute part of an offer or contract. We have not carried out a structural survey and the services, appliances and specific fittings have not been tested. All photographs, measurements, floorplans and distances referred to are given as a guide only and should not be relied upon for the purchase of carpets or any other fixtures or fittings. Lease details, service charges and ground rent (where applicable) and council tax are given as a guide only and should be checked and confirmed by your Solicitor prior to exchange of contracts. The copyright of all details, photographs and floorplans remain exclusive to Osprey Property.



Osprey Oundle Sales
6 Crown Court, Market Place, Oundle PE8 4BQ
T: 01832 272225 |
osprey-property.co.uk