



Bevan Close, Warmington
£350,000



A well-maintained and neutrally presented four-bedroom town house benefitting from off-road parking for three cars, a private, south-east facing garden, and an en-suite wet room. Additionally, this home has a high energy efficiency rating with an air source heat pump.

On the ground floor, there is an entrance hallway, which leads to the kitchen/breakfast room. A range of wall and base units are provided, along with wood worktops, a tiled splashback, an integrated oven and ceramic sink. The living room is bright and neutral with a stone fire surround as the focal point. French doors open out onto the patio area. Additionally, there is a downstairs cloakroom.

On the first floor there are two good sized double bedrooms and one single bedroom. The main bedroom has a built-in wardrobe and a modern en-suite wet room with floor to ceiling tiling and built in shelving. A family bathroom completes this level.

The second floor offers another large double bedroom. This space is dual aspect, with Velux windows and further built in storage.

Externally, this home has a well-kept and private garden, with two patio areas, perfect for outdoor dining. There is a lean-to, with power, stretching the length of the house, providing ample storage space.

Tenure: Freehold

Air Source Heat Pump

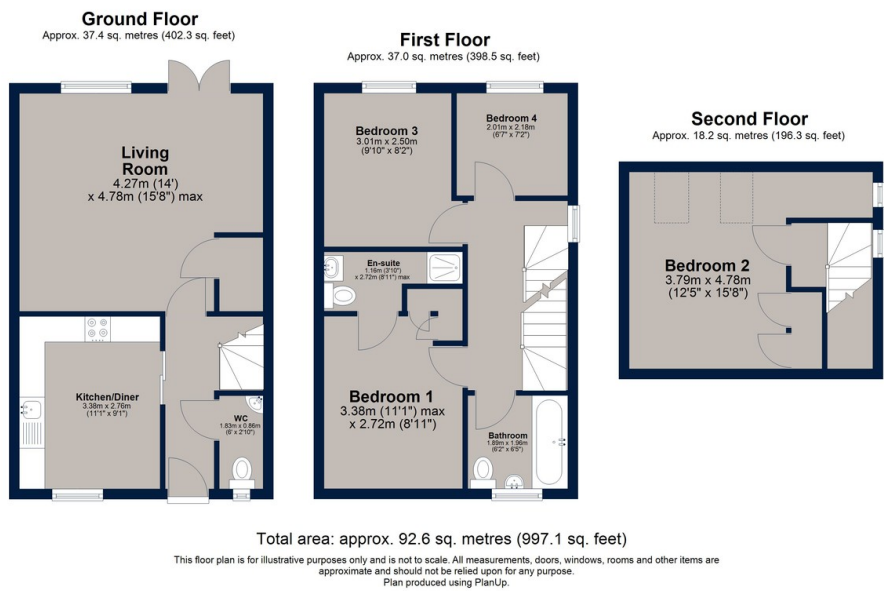
Council Tax: Band C

No Forward Chain



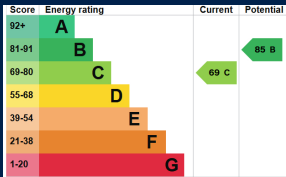


Bevan Close, Warmington



A well-maintained four-bedroom end of terrace home with off-road parking for three cars, an air source heat pump and private garden.

Presented in move-in condition and offered with no forward chain.



Osprey Oakham
4 Burley Road
Oakham
Rutland LE15 6DH
01572 756675
oakham@osprey-property.co.uk

Osprey Stamford
7 Red Lion Street
Stamford
Lincolnshire, PE9 1PA
01780 769269
stamford@osprey-property.co.uk

Osprey Oundle
6 Crown Court
Market Place
Oundle, PE8 4BQ
01832 272225
oundle@osprey-property.co.uk

Osprey Melton
8 Burton Road
Melton
Leicestershire, LE13 1AE
01664 778170
melton@osprey-property.co.uk



Agents Note: Whilst every care has been taken to prepare these particulars, they are for guidance purposes only. All measurements are approximate, and are for general guidance purposes only and whilst every care has been taken to ensure their accuracy, they should not be relied upon, and potential buyers/tenants are advised to recheck the measurements