



Offers in the region of £335,000 | Freehold

Braunston Road, Oakham LE15 6RU





Key Features & Description

- Three Bedroom
- Semi Detached Home
- Beautifully Presented
- En Suite to Bedroom One
- Dining Kitchen
- Downstairs W/C
- Close to Town
- Allocated Parking
- EPC Rating B | Council Tax Band B
- Service Charge £180 PA |

This modern and stylish three-bedroom semi-detached home is beautifully presented throughout and ideally located within close proximity to Oakham town centre. Offering bright, well-proportioned accommodation, the home has been recently re-carpeted and tastefully decorated, creating a fresh and welcoming feel.

The ground floor comprises a lovely entrance hall, a contemporary living room filled with natural light, and a modern open-plan dining kitchen fitted with quartz worktops, an induction hob and a range of built-in appliances. French doors open from the dining area onto the landscaped rear garden, making this an ideal space for entertaining and family living. A convenient downstairs WC completes the ground floor.

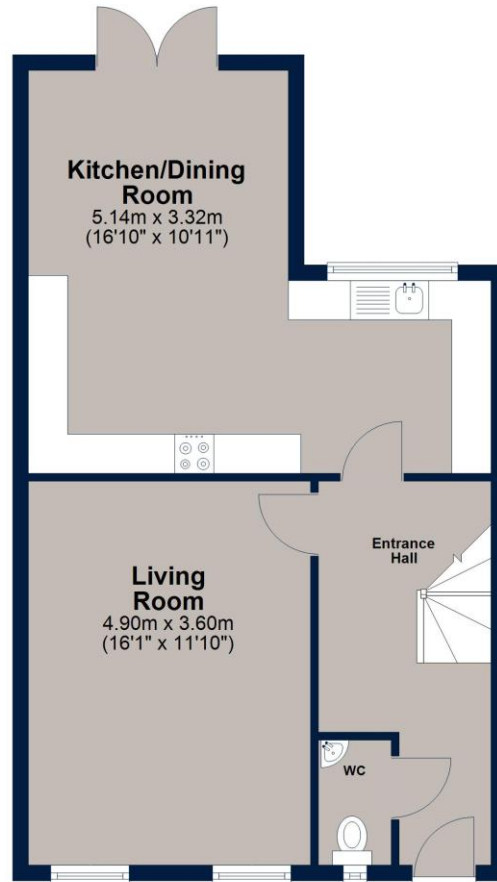
To the first floor are three well-proportioned bedrooms, including a generous principal bedroom with a modern en-suite shower room. The remaining bedrooms are served by a stylish family bathroom.

Externally, the property enjoys landscaped front and rear gardens, allocated parking for two plus EV charging point, and the added benefit of a semi-detached position. This bright and modern home is ideal for families, professionals, or those seeking a low-maintenance property in a sought-after location close to Oakham town centre.



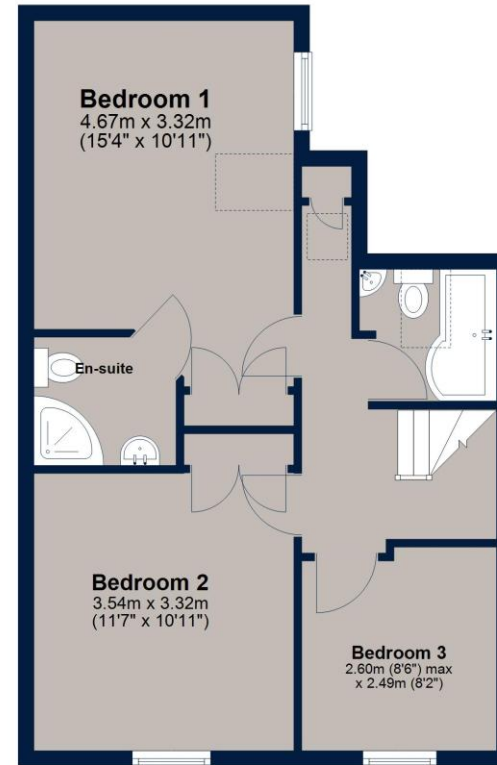
Ground Floor

Approx. 52.9 sq. metres (569.8 sq. feet)



First Floor

Approx. 48.3 sq. metres (519.5 sq. feet)



Total area: approx. 101.2 sq. metres (1089.3 sq. feet)

Plan is for illustration purposes only and may not be representative of the property. Plan is not to scale. Plan produced by M-Photo. www.m-photo.pro
Plan produced using PlanUp.

Important Notice

We have prepared these property particulars as a general guide to a broad description of the property. They are not intended to constitute part of an offer or contract. We have not carried out a structural survey and the services, appliances and specific fittings have not been tested. All photographs, measurements, floorplans and distances referred to are given as a guide only and should not be relied upon for the purchase of carpets or any other fixtures or fittings. Lease details, service charges and ground rent (where applicable) and council tax are given as a guide only and should be checked and confirmed by your Solicitor prior to exchange of contracts. The copyright of all details, photographs and floorplans remain exclusive to Osprey Property.



Osprey Oakham Sales

4 Burley Road, Oakham, Rutland LE15 6DH

T: 01572 756675 |

osprey-property.co.uk