



Asking Price £385,000 | Freehold

Old North Road, Wansford, Cambridgeshire, PE8, PE8 6LB





## Key Features & Description

- Landscaped Gardens
- Garage and Driveway for Nine Cars
- Immaculately Presented
- No Forward Chain
- En-Suite Shower Room
- Village Location
- EPC Rating D | Council Tax Band C

**\*LARGE DRIVEWAY\* \*GARAGE\* \*EN-SUITE SHOWER ROOM\* \*NO FORWARD CHAIN\* \*IMMACULATEDLY PRESENTED\* \*LANDSCAPED GARDENS\***

An immaculately presented three-bedroom semi-detached home which has been extended and continually upgraded by the current owner, with new windows, beautifully landscaped gardens, a driveway for at least nine cars and a garage.

This home comprises of a spacious entrance hallway with wooden flooring, leading through to the living/dining room. This bright space is enhanced by a large bay window overlooking the front garden, a stone fireplace with a wood burner as the focal point and alcoves, perfect for storage. Sliding glass doors connect to the kitchen, which has been well thought out, with integrated appliances, a range of handmade wall and base units, tiled flooring and a cream tiled splashback. French doors lead to the rear garden.

Upstairs, the main bedroom is large, with a wall of fitted wardrobes, a dressing area, a window with beautiful countryside views and a modern en-suite shower room, with a heated towel rail and floor to ceiling tiling. There are two further double bedrooms, the second having built-in wardrobes. A fresh and neutral shower room completes this floor.

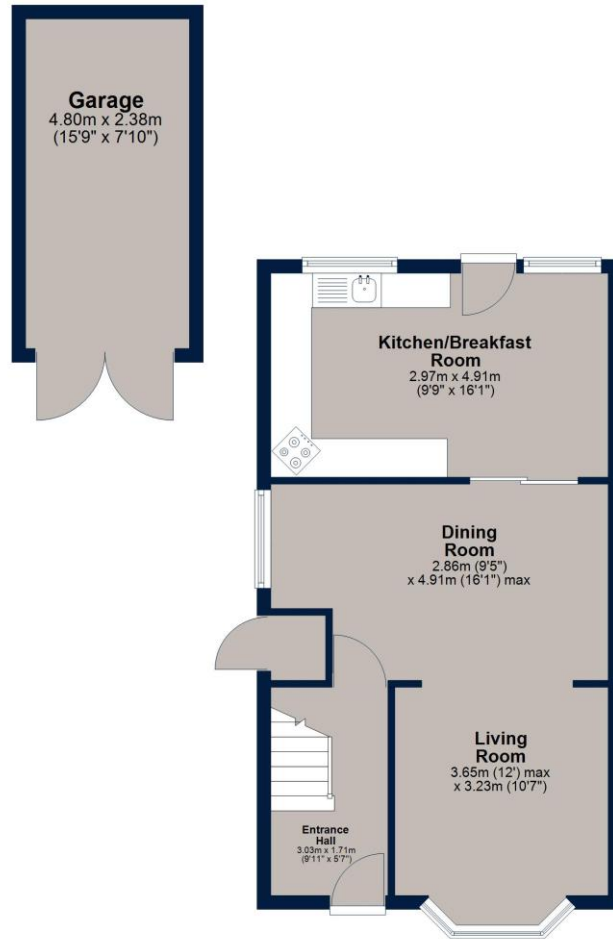
Externally, this property benefits from landscaped front and rear gardens, with a large gravel driveway. The rear garden is a true highlight of the property. It is south-west facing, and has been thoughtfully designed, including a large patio area with a charming brick-built barbeque area, perfect for outdoor dining. A pathway leads to the bottom of the garden which has a summerhouse with power and an additional patio seating area. The long front garden is equally as impressive, with stone borders, established planting, and a pathway leading to the front door.

Located in the desirable village of Wansford and offered with no forward chain. With easy access to the A1, nearby Stamford, Peterborough, Kettering and Corby all offering train links to London in under an hour.



## Ground Floor

Approx. 56.5 sq. metres (608.6 sq. feet)



## First Floor

Approx. 42.5 sq. metres (457.8 sq. feet)



Total area: approx. 99.1 sq. metres (1066.5 sq. feet)

Plan is for illustration purposes only and may not be representative of the property. Plan is not to scale. Plan produced by M-Photo. [www.m-photo.pro](http://www.m-photo.pro)  
Plan produced using PlanUp.

### Important Notice

We have prepared these property particulars as a general guide to a broad description of the property. They are not intended to constitute part of an offer or contract. We have not carried out a structural survey and the services, appliances and specific fittings have not been tested. All photographs, measurements, floorplans and distances referred to are given as a guide only and should not be relied upon for the purchase of carpets or any other fixtures or fittings. Lease details, service charges and ground rent (where applicable) and council tax are given as a guide only and should be checked and confirmed by your Solicitor prior to exchange of contracts. The copyright of all details, photographs and floorplans remain exclusive to Osprey Property.