



Offers Over £350,000 | Freehold

Main Street, Wymondham LE14 2AG





Key Features & Description

- Double Fronted Cottage
- Three Bedroom
- Newly fitted Windows & Doors
- Gas stove to the Living Room
- Dining Kitchen
- Renowned Village Location
- Easy access to Oakham & Melton
- Front and Rear Gardens
- EPC Rating D | Council Tax Band D

A beautifully presented cottage offering well-proportioned accommodation arranged over two floors, located within a sought-after village between Melton and Oakham. The village benefits from a renowned public house and a very active village hall, creating a strong sense of community.

The property has been thoughtfully improved by the current owner and now benefits from new windows, doors and a modern boiler. Further enhancements include full redecoration throughout and the installation of new carpets, creating a home that is ready to move into.

The accommodation comprises a dining kitchen providing ample space for everyday living and entertaining, along with a cosy lounge featuring a gas stove as a central focal point. To the first floor are two double bedrooms, a good-sized single bedroom and a family bathroom.

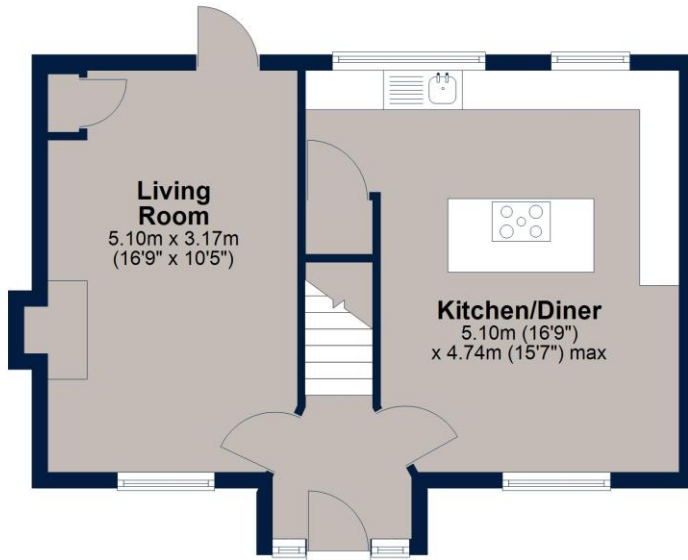
Externally, the property enjoys a charming cottage-style front garden with a pathway leading to the front door. To the rear is a private garden area with a useful brick-built outhouse, offering additional storage or potential for further use.





Ground Floor

Approx. 42.3 sq. metres (455.8 sq. feet)



First Floor

Approx. 40.9 sq. metres (440.3 sq. feet)



Total area: approx. 83.3 sq. metres (896.1 sq. feet)

Plan is for illustration purposes only and may not be representative of the property. Plan is not to scale. Plan produced by M-Photo. www.m-photo.pro
Plan produced using PlanUp.

Important Notice

We have prepared these property particulars as a general guide to a broad description of the property. They are not intended to constitute part of an offer or contract. We have not carried out a structural survey and the services, appliances and specific fittings have not been tested. All photographs, measurements, floorplans and distances referred to are given as a guide only and should not be relied upon for the purchase of carpets or any other fixtures or fittings. Lease details, service charges and ground rent (where applicable) and council tax are given as a guide only and should be checked and confirmed by your Solicitor prior to exchange of contracts. The copyright of all details, photographs and floorplans remain exclusive to Osprey Property.