



Asking Price £295,000 | Freehold

Easton Close, Melton Mowbray LE13 0RY





Key Features & Description

- Three sizeable bedrooms and two bathrooms
- Countryside views
- 5 years left on NHBC warranty
- Driveway parking
- Neutral décor, providing a bright modern feel
- EPC Rating B | Council Tax Band D
- Service Charge £210 PA |

A beautifully presented three-bedroom three-storey semi-detached family home which has been lovingly maintained throughout.

The ground floor is designed with family life in mind, featuring a bright and stylish open-plan kitchen/dining space that flows to the rear garden through French doors- ideal for everyday living and entertaining. The kitchen is finished in modern units with ample storage and worktop space, while the dining area comfortably accommodates family meals and gatherings. A welcoming living room provides a cosy retreat, decorated in neutral tones and filled with natural light and a convenient ground floor WC completes this level.

On the first floor are two well-proportioned bedrooms, ideal for children, guests or a home office, along with a modern family bathroom finished to a high standard.

Occupying the entire top floor is the impressive main bedroom, creating a peaceful and private retreat. This generous space benefits from excellent natural light and offers a true sense of separation from the rest of the home- Ideal for relaxing at the end of the day.

Outside, the enclosed rear garden provides a private and secure space for children to play or for outdoor entertaining, while off road parking adds everyday convenience.

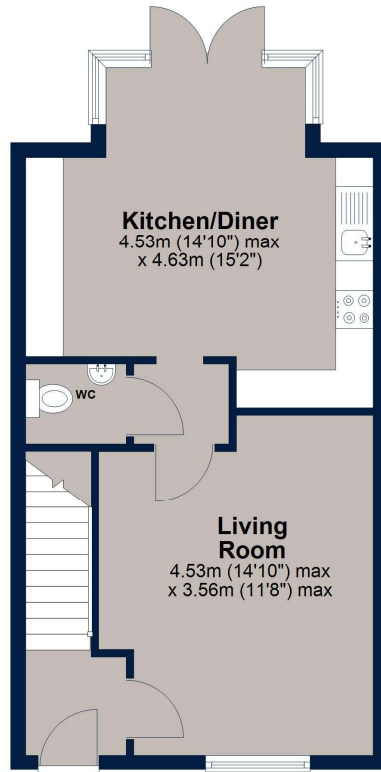
This is a fantastic opportunity to acquire a modern, low maintenance home that has been genuinely loved by a family, set within a friendly residential location.





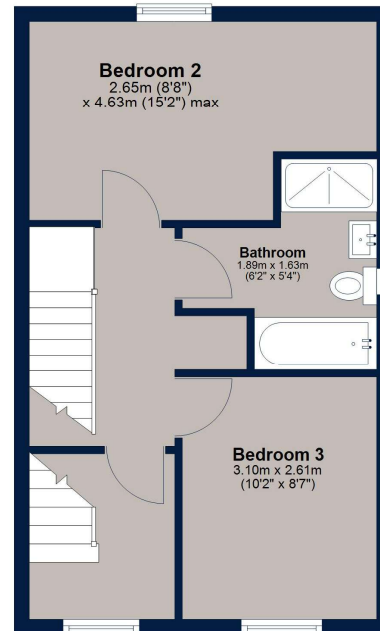
Ground Floor

Approx. 39.7 sq. metres (426.9 sq. feet)



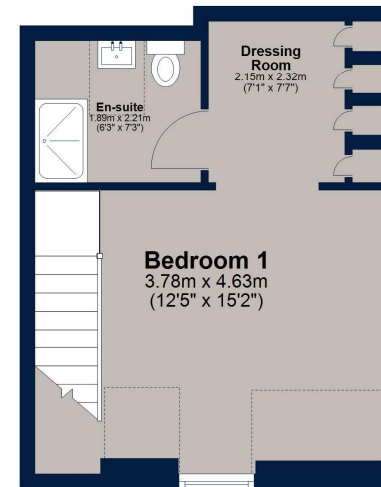
First Floor

Approx. 36.6 sq. metres (393.9 sq. feet)



Second Floor

Approx. 27.3 sq. metres (294.1 sq. feet)



Total area: approx. 103.6 sq. metres (1115.0 sq. feet)

Plan is for illustration purposes only and may not be representative of the property. Plan is not to scale. Plan produced by M-Photo. www.m-photo.pro
Plan produced using PlanUp.

Important Notice

We have prepared these property particulars as a general guide to a broad description of the property. They are not intended to constitute part of an offer or contract. We have not carried out a structural survey and the services, appliances and specific fittings have not been tested. All photographs, measurements, floorplans and distances referred to are given as a guide only and should not be relied upon for the purchase of carpets or any other fixtures or fittings. Lease details, service charges and ground rent (where applicable) and council tax are given as a guide only and should be checked and confirmed by your Solicitor prior to exchange of contracts. The copyright of all details, photographs and floorplans remain exclusive to Osprey Property.



Osprey Melton Mowbray Sales

8A Burton Street, Melton Mowbray, Leicestershire LE13 1AE

T: 01664 778170 | melton@osprey-property.co.uk

osprey-property.co.uk