



Offers Over £400,000 | Freehold

Westons Lane, Langham, Oakham, LE15 7JT





Key Features & Description

- Character cottage-style home
- Three bedrooms
- Three Reception Rooms
- Wood Burning Stove and Open Fire
- Utility and W/C
- Freestanding Bath and Separate Shower
- Walled Courtyard Garden
- Village location
- Close to local amenities
- EPC Rating D | Council Tax Band D

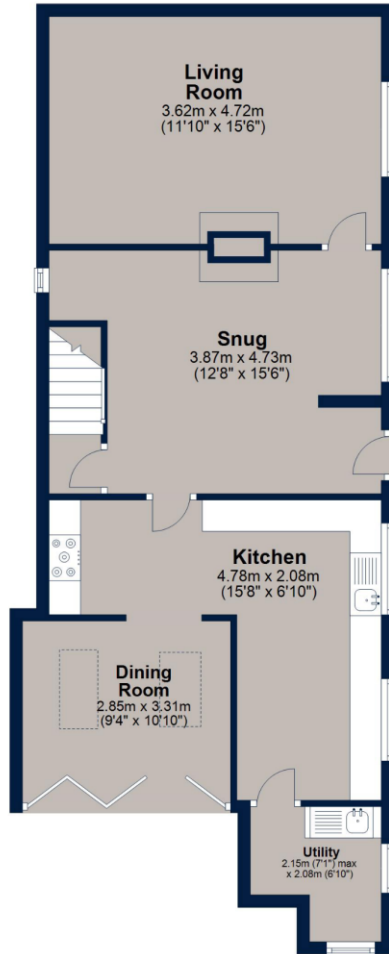
Three-bedroom Chocolate box cottage in the heart of Langham village. Appreciating many original features throughout, this unique cottage has been greatly improved by the current owner and presented in show-home condition. Enjoying two reception rooms, dining kitchen, utility / w/c, and bathroom with roll top bath. The front door opens to the lovely snug with tiled floor and wood burner, door from here leads to the stair, living room, and kitchen. Into the L-shaped kitchen with wall and floor mounted units, built-in appliances, and space for a Range style cooker. There is a dining area off with two skylights and Bi-fold doors to the garden. Also off the kitchen is a utility room and W/C. To complete this floor is the living room with an open fire and window seat. Climbing the stairs to the landing, where you gain access to, two double bedrooms one with built-in wardrobes and a good-sized single. The Family bathroom with exposed beams, benefits from a walk-in shower and roll-top freestanding bath. The outside courtyard garden offers a fantastic and easily maintainable space to enjoy all year-round with multiple levels and a summer house in the far corner. The garden has a south-west facing. There is also a pedestrian gate leading back out the front driveway and parking.



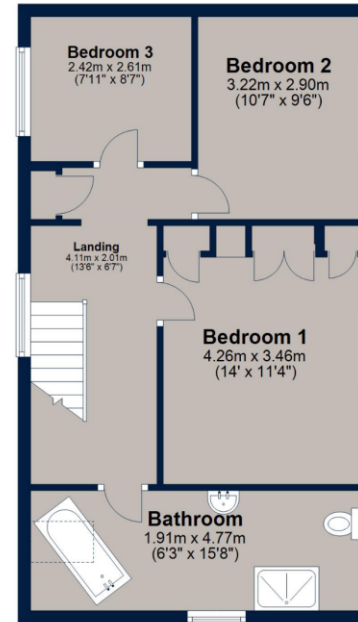
VILLAGE LOCATION: Langham is a thriving and friendly village with many amenities including a public house, a village hall, allotments and a church. Langham also offers a children's play area and an array of superb countryside walks. The village primary school is within walking distance, and the town of Oakham offers a variety of primary schools as well as Catmose Secondary School, Oakham School and Harrington Sixth Form. Oakham offers easy access to shops, restaurants and the railway station, linking the area to Leicester, Peterborough and beyond. There are also brilliant bus routes to and from local amenities and attractions.



Ground Floor



First Floor



Total area: approx. 119.2 sq. metres (1283.0 sq. feet)

Plan is for illustration purposes only and may not be representative of the property. Plan is not to scale. Plan produced by M-Photo
Plan produced using PlanUp.



Important Notice

We have prepared these property particulars as a general guide to a broad description of the property. They are not intended to constitute part of an offer or contract. We have not carried out a structural survey and the services, appliances and specific fittings have not been tested. All photographs, measurements, floorplans and distances referred to are given as a guide only and should not be relied upon for the purchase of carpets or any other fixtures or fittings. Lease details, service charges and ground rent (where applicable) and council tax are given as a guide only and should be checked and confirmed by your Solicitor prior to exchange of contracts. The copyright of all details, photographs and floorplans remain exclusive to Osprey Property.



Osprey Oakham Sales
4 Burley Road, Oakham, Rutland, LE15 6DH
T: 01572 756675 |
osprey-property.co.uk