



Asking Price £625,000 | Freehold

Witchley Close, Oakham, Rutland, LE15 6FZ





Key Features & Description

- Situated within a private cul-de-sac
- Five impressive bedrooms
- Two bedrooms with en-suite facilities
- Planning permission for loft conversion
- Spacious open-plan kitchen/dining room ideal for modern living
- Separate utility room with access to double garage
- EPC Rating C | Council Tax Band F

Situated within an private cul-de-sac, this impressive five-bedroom detached residence offers generous and highly versatile living space, along with the added advantage of approved planning permission for a loft conversion—providing excellent scope to further enhance an already substantial home.

The property opens into a welcoming entrance hall with a convenient ground floor W/C. At the heart of the home lies a spacious kitchen/dining room, perfectly suited to modern family living and entertaining, complemented by a separate utility room with direct access to the double garage.

Further ground floor accommodation includes a formal dining room and a well-proportioned living room, both offering flexible and comfortable spaces for relaxation and hosting.

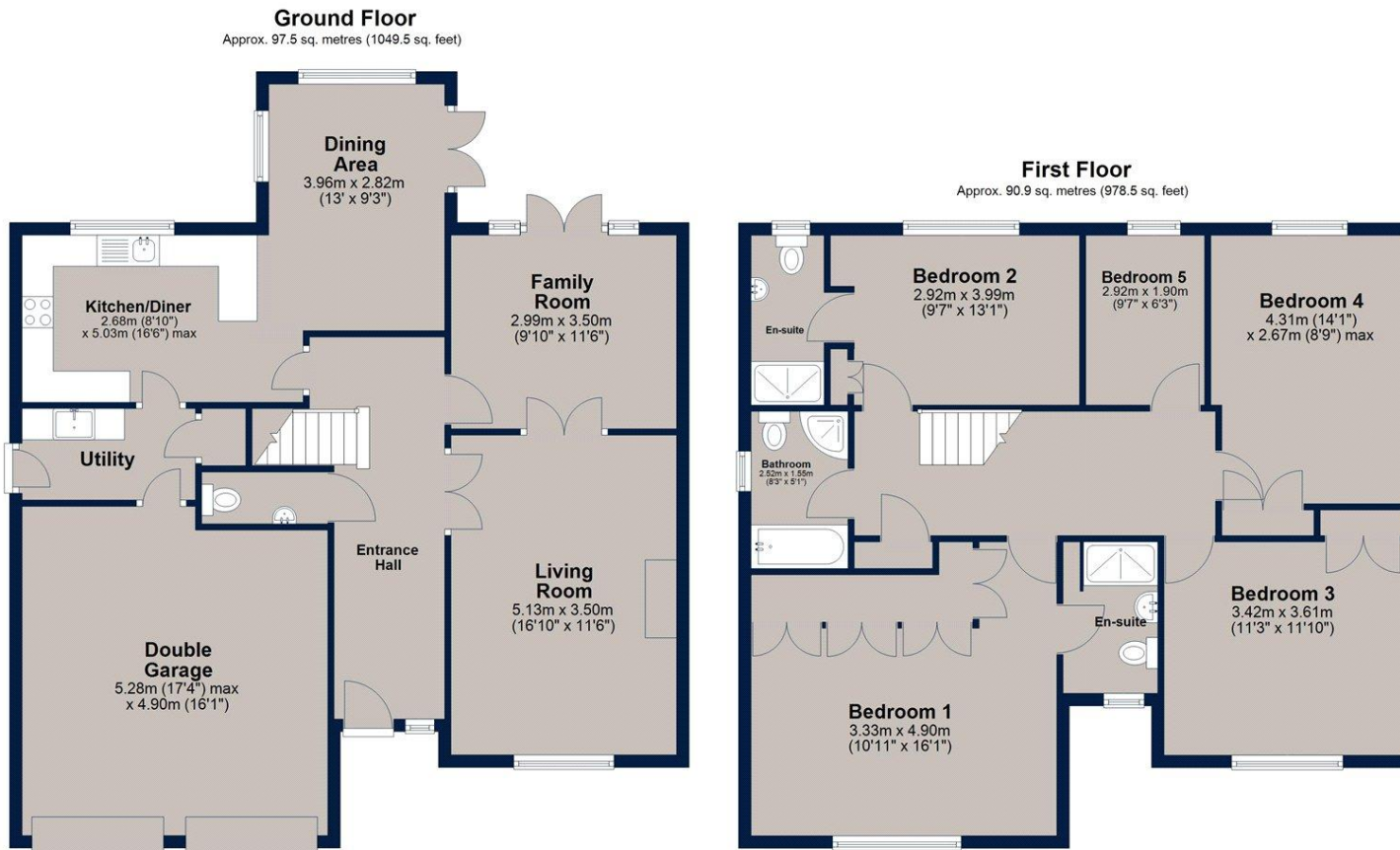
To the first floor, the property continues to impress with four generously sized double bedrooms and a fifth single bedroom. Two bedrooms benefit from en-suite facilities, while the remaining rooms are served by a stylish family bathroom, complete with a separate walk-in shower.

Externally, the rear garden is predominantly laid to lawn, providing an excellent space for families and outdoor entertaining. A sun terrace with pergola offers the ideal setting for al fresco dining, alongside two additional seating areas designed to capture different aspects of the garden throughout the day.

To the front, a driveway provides off-road parking for two vehicles and access to the double garage.







Total area: approx. 188.4 sq. metres (2028.0 sq. feet)

Plan is for illustration purposes only and may not be representative of the property. Plan is not to scale. Plan produced by M-Photo. www.m-photo.pro
Plan produced using PlanUp.

Important Notice

We have prepared these property particulars as a general guide to a broad description of the property. They are not intended to constitute part of an offer or contract. We have not carried out a structural survey and the services, appliances and specific fittings have not been tested. All photographs, measurements, floorplans and distances referred to are given as a guide only and should not be relied upon for the purchase of carpets or any other fixtures or fittings. Lease details, service charges and ground rent (where applicable) and council tax are given as a guide only and should be checked and confirmed by your Solicitor prior to exchange of contracts. The copyright of all details, photographs and floorplans remain exclusive to Osprey Property.



Osprey Oakham Sales
4 Burley Road, Oakham, Rutland LE15 6DH
T: 01572 756675 |
osprey-property.co.uk