



Asking Price £625,000 | Freehold
Saltby Road, Croxton Kerrial NG32 1QG



Saltby Road, Croxton Kerrial NG32 1QG

- Four-bedroom detached new-build home by Lagan Homes
 - Located on the desirable Hillcrest Gardens development
 - Situated in the sought-after village of Croxton Kerrial
 - Spacious entrance hall
 - Separate dining room
 - Dedicated study/home office
 - Generous living room with double doors to the rear garden
 - Open-plan kitchen/dining room
-

A stunning four-bedroom detached new-build home situated on Hillcrest Gardens development by Lagan Homes in the village of Croxton Kerrial.

Finished to a high specification throughout, this family home includes a welcoming entrance hall, formal dining room, separate study, generous living room, and a spacious open-plan kitchen/dining room with adjoining utility room.

To the first floor, a spacious landing leads to four bedrooms, with the master bedroom and second bedrooms benefiting from en-suite shower rooms, alongside a bright, good size family bathroom.



 SPREY
PROPERTY





Externally, the property has a bright and generous rear garden with double doors out the living room and dining room, a double garage, and two allocated parking spaces.

Further benefits include an energy-efficient air source heat pump.

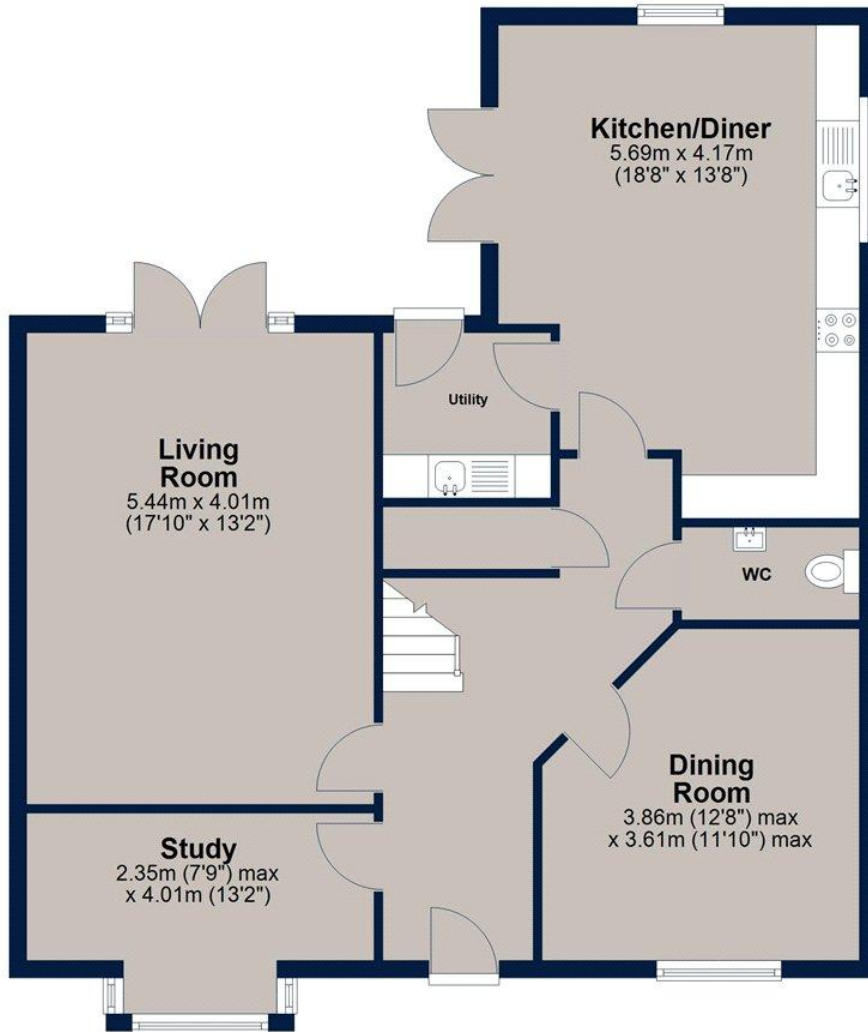
Located in the village of Croxton Kerrial, Hillcrest Gardens enjoys a peaceful countryside setting whilst remaining connected, with Melton Mowbray just 8 miles away and Grantham only 6 miles away, offering a range of amenities, schools and transport links.

Offering modern accommodation, energy-efficient features and a great village setting, this is a home perfectly suited to family life.



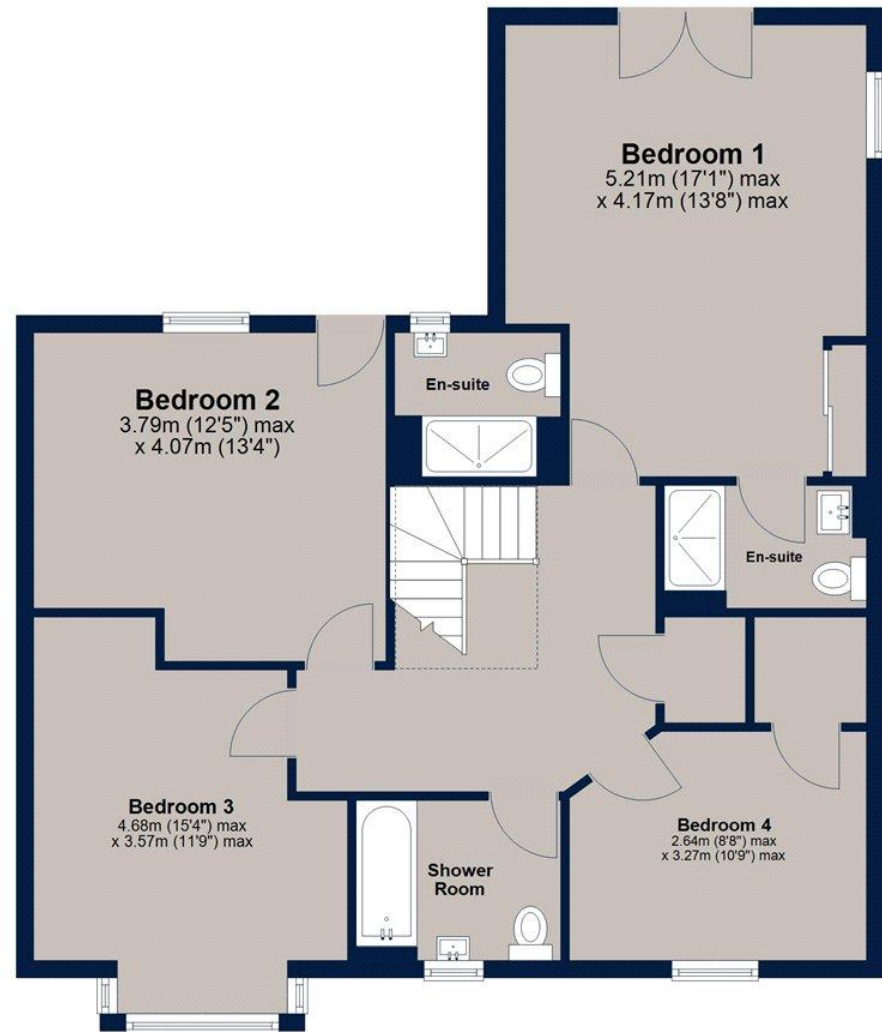
Ground Floor

Approx. 85.5 sq. metres (920.1 sq. feet)



First Floor

Approx. 85.5 sq. metres (919.9 sq. feet)



Total area: approx. 170.9 sq. metres (1840.0 sq. feet)

Plan is for illustration purposes only and may not be representative of the property. Plan is not to scale. Plan produced by M-Photo. www.m-photo.pro
Plan produced using PlanUp.

Key Information

Local Authority- Melton Borough Council

Council Tax Band - To be advised

Tenure - Freehold

EPC Rating - To be confirmed



Osprey Oakham Sales

4 Burley Road, Oakham

Rutland

LE15 6DH

T: **01572 756675**

osprey-property.co.uk



Mortgage Scout* are experts at seeking out the best way to buy the home of your dreams. They've been matching buyers with money saving mortgages since 2003. Combining attention to detail with industry knowledge, they'll track down the mortgage deal that works for you.

*Your home may be repossessed if you do not keep up repayments on your mortgage. There may be a fee for mortgage advice. The actual amount you pay will depend upon your circumstances. The fee is up to 1%, but a typical fee is 0.3% of the amount borrowed.

Important Notice

We have prepared these property particulars as a general guide to a broad description of the property. They are not intended to constitute part of an offer or contract. We have not carried out a structural survey and the services, appliances and specific fittings have not been tested. All photographs, measurements, floorplans and distances referred to are given as a guide only and should not be relied upon for the purchase of carpets or any other fixtures or fittings. Lease details, service charges and ground rent (where applicable) and council tax are given as a guide only and should be checked and confirmed by your Solicitor prior to exchange of contracts. The copyright of all details, photographs and floorplans remain exclusive to Osprey Property.