



Asking Price £495,000 | Freehold

Saltby Road, Croxton Kerrial, Leicestershire, NG32 1QG



## Key Features & Description

- Brand new two-bedroom detached bungalow
- Located on the Hillcrest Gardens development by Lagan Homes
- Spacious single-storey accommodation
- Principal bedroom with en-suite shower room
- EPC Rating To be confirmed | Council Tax Band

A well-designed two-bedroom detached bungalow located on the Hillcrest Gardens development by Lagan Homes in the village of Croxton Kerrial.

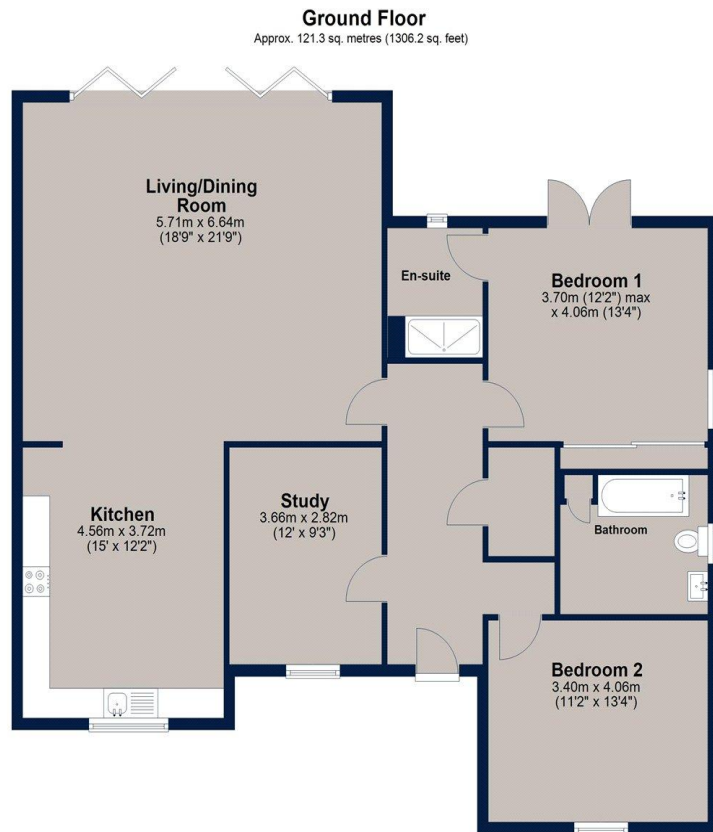
The accommodation comprises an entrance hallway, study, spacious kitchen/dining room, two bedrooms, family bathroom and an en-suite shower room to the master bedroom.

The layout has been thoughtfully designed to provide comfortable and practical single-storey living.

Outside, the property benefits from a private rear garden, single garage and off-street parking.

Finished to a high specification throughout, The Burren offers modern, energy-efficient living in a sought-after village location.

Grantham is approximately 6 miles away and Melton Mowbray around 8 miles away, providing a range of shops, restaurants, schools and transport links.



Total area: approx. 121.3 sq. metres (1306.2 sq. feet)

Plan is for illustration purposes only and may not be representative of the property. Plan is not to scale. Plan produced by M-Photo. www.m-photo.pro  
Plan produced using PlanUp.

### Important Notice

We have prepared these property particulars as a general guide to a broad description of the property. They are not intended to constitute part of an offer or contract. We have not carried out a structural survey and the services, appliances and specific fittings have not been tested. All photographs, measurements, floorplans and distances referred to are given as a guide only and should not be relied upon for the purchase of carpets or any other fixtures or fittings. Lease details, service charges and ground rent (where applicable) and council tax are given as a guide only and should be checked and confirmed by your Solicitor prior to exchange of contracts. The copyright of all details, photographs and floorplans remain exclusive to Osprey Property.