



Offers Over £325,000 | Freehold

Queens Walk, Stamford, Lincolnshire, PE9 2QE





Key Features & Description

- Three bedroom Home
- Period Features
- Two Reception Rooms
- Scope for Improvement
- Ground floor Bathroom
- En-Suite to Bedroom One
- Off road parking
- Easy Access to Stamford Town
- Available with No Forward Chain
- EPC Rating E | Council Tax Band B

Guide Price of £325,000 - £350,000. Available with no forward chain, this attractive period property offers a wealth of character and is ideal for buyers looking to add their own personal touch. Requiring some cosmetic improvement, the home retains many original features, including attractive fireplaces in the main living room and principal bedroom.

The ground floor comprises two well-proportioned reception rooms, both benefiting from feature fireplaces, a fitted kitchen, and a downstairs bathroom. To the first floor, the principal bedroom enjoys the advantage of an en-suite shower room, while two further bedrooms are situated to the rear of the property. Externally, the property benefits from a block-paved driveway providing off-road parking, together with gated side access leading to the rear garden. The tiered rear garden is designed for ease of maintenance and offers excellent potential for landscaping to create a more versatile and enjoyable outdoor space.

TOWN LIFE

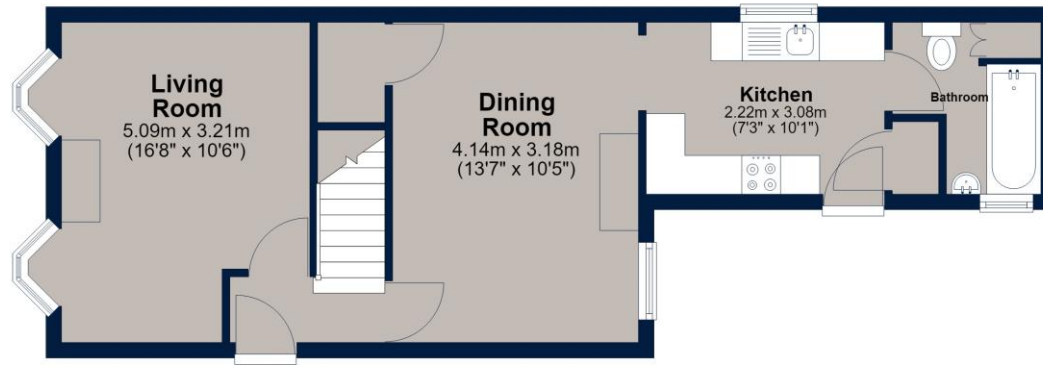
Conveniently placed a short walk from the High Street and George Hotel, and without doubt is perfectly balanced in terms of easy access to day-to-day amenities, a town centre lifestyle, and yet quiet location. The High Street of Stamford is within walking distance of the property, offering excellent day to day shopping, coffee shops, supermarkets, eateries, public houses and boutique shops. In addition, it is home to Stamford Endowed School, High School and a further educational college. Owing to this and the cultural lifestyle on offer, Stamford has been voted as one of THE best places to live and raise a family.





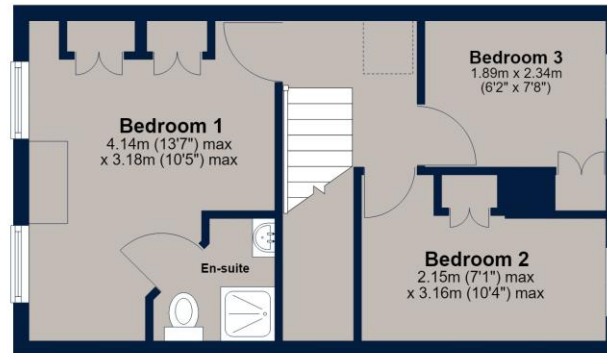
Ground Floor

Approx. 45.6 sq. metres (490.4 sq. feet)



First Floor

Approx. 30.9 sq. metres (332.3 sq. feet)



Total area: approx. 76.4 sq. metres (822.7 sq. feet)

Plan is for illustration purposes only and may not be representative of the property. Plan is not to scale. Plan produced by M-Photo. www.m-photo.pro
Plan produced using PlanUp.

Important Notice

We have prepared these property particulars as a general guide to a broad description of the property. They are not intended to constitute part of an offer or contract. We have not carried out a structural survey and the services, appliances and specific fittings have not been tested. All photographs, measurements, floorplans and distances referred to are given as a guide only and should not be relied upon for the purchase of carpets or any other fixtures or fittings. Lease details, service charges and ground rent (where applicable) and council tax are given as a guide only and should be checked and confirmed by your Solicitor prior to exchange of contracts. The copyright of all details, photographs and floorplans remain exclusive to Osprey Property.