



Glaphorn Road, Oundle  
£649,000





We are delighted to introduce to the market this beautifully positioned eco-bungalow on a substantial, private plot, with four/five bedrooms and three receptions. It has been greatly improved over the years by its current owners to a very high specification.

Positioned in a private spot, behind double gates, off Glaphorn Road, this well maintained four/five bedroomed bungalow has been lovingly cared for and is presented in immaculate condition. The current owners have upgraded many elements of the property to include, but not limited to, a Kuchen Kraft kitchen, new conservatory in 2021, underfloor heating to kitchen/utility and bathrooms, solar panels installed, electric roller shutter door to the double garage and much more.





This detached home has extremely versatile accommodation and has wrap around gardens with views beyond. An internal viewing is highly recommended.

The primary school, doctors' surgery and library are within walking distance and only a mile away is the bustling town centre with its thriving shops, restaurants, businesses, and schools. Oundle lies in the lovely rural county of Northamptonshire, yet Peterborough, Kettering, Corby and Stamford are within a 15-mile radius, providing further amenities and good links to the road and rail network.

Tenure: Freehold

All mains services are connected

Gas radiator heating

Solar panels with FIT

Council Tax: Band F







## Entrance Hall

Living Room 4.5 x 5.7 (14'9" x 18'8")

Conservatory 2.5 x 3.3 (8'2" x 10'9")

Snug 3.5 x 3.5 (11'5" x 11'5")

Kitchen Diner 4.9 x 3.2 (16'0" x 10'5").

Utility Room 3.5 x 2.3 (11'5" x 7'6")

Principal Bedroom 2.7 x 4.1 (8'10" x 13'5")

En-Suite Shower Room 2.7 x 2.4 (8'10" x 7'10")

Bedroom Two 3.4 x 3.4 (11'1" x 11'1")

Bedroom Three 2.7 x 3.1 (8'10" x 10'2")

Bedroom Four 2.7 x 2.6 (8'10" x 8'6")

Study/Bedroom Five 2.8 x 2.6 (9'2" x 8'6")

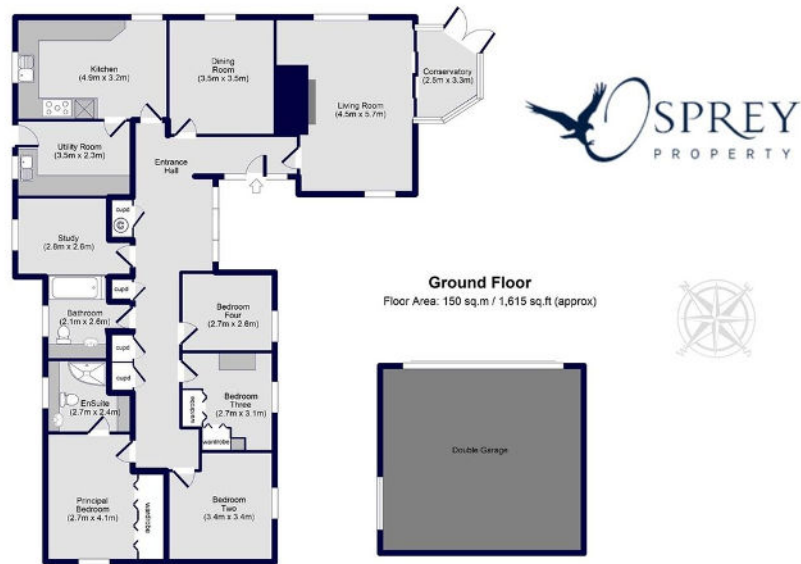
Family Bathroom 2.1 x 2.6 (6'10" x 8'6")

## Exterior





# Glaphorn Road, Oundle



**Ground Floor**  
Floor Area: 150 sq.m / 1,615 sq.ft (approx)

Total Property Floor Area: 150 sq.m / 1,615 sq.ft (approx)  
Including Garage: 186 sq.m / 2,002 sq.ft (approx)  
This plan is for illustration purposes only and may not be representative of the property. Plan not to scale.

Osprey Oakham  
4 Burley Road  
Oakham  
Rutland LE15 6DH  
01572 756675  
oakham@osprey-property.co.uk

Osprey Stamford  
7 Red Lion Street  
Stamford  
Lincolnshire, PE9 1PA  
01780 769269  
stamford@osprey-property.co.uk

Osprey Oundle  
6 Crown Court  
Market Place  
Oundle, PE8 4BQ  
01832 272225  
oundle@osprey-property.co.uk

Osprey Melton  
8 Burton Road  
Melton  
Leicestershire, LE13 1AE  
01664 778170  
melton@osprey-property.co.uk

An eco-bungalow with income generating solar panels. 150sqm floorspace. Three receptions and four/five bedrooms. A substantial, private plot and vast parking.

Energy Efficiency Rating		Current	Potential
<small>Very energy efficient - lower running costs</small>			
(92-100)	<b>A</b>		
(81-91)	<b>B</b>		
(69-80)	<b>C</b>	82	87
(55-68)	<b>D</b>		
(39-54)	<b>E</b>		
(21-38)	<b>F</b>		
(1-20)	<b>G</b>		
<small>Not energy efficient - higher running costs</small>			
England, Scotland & Wales			EU Directive 2002/91/EC

